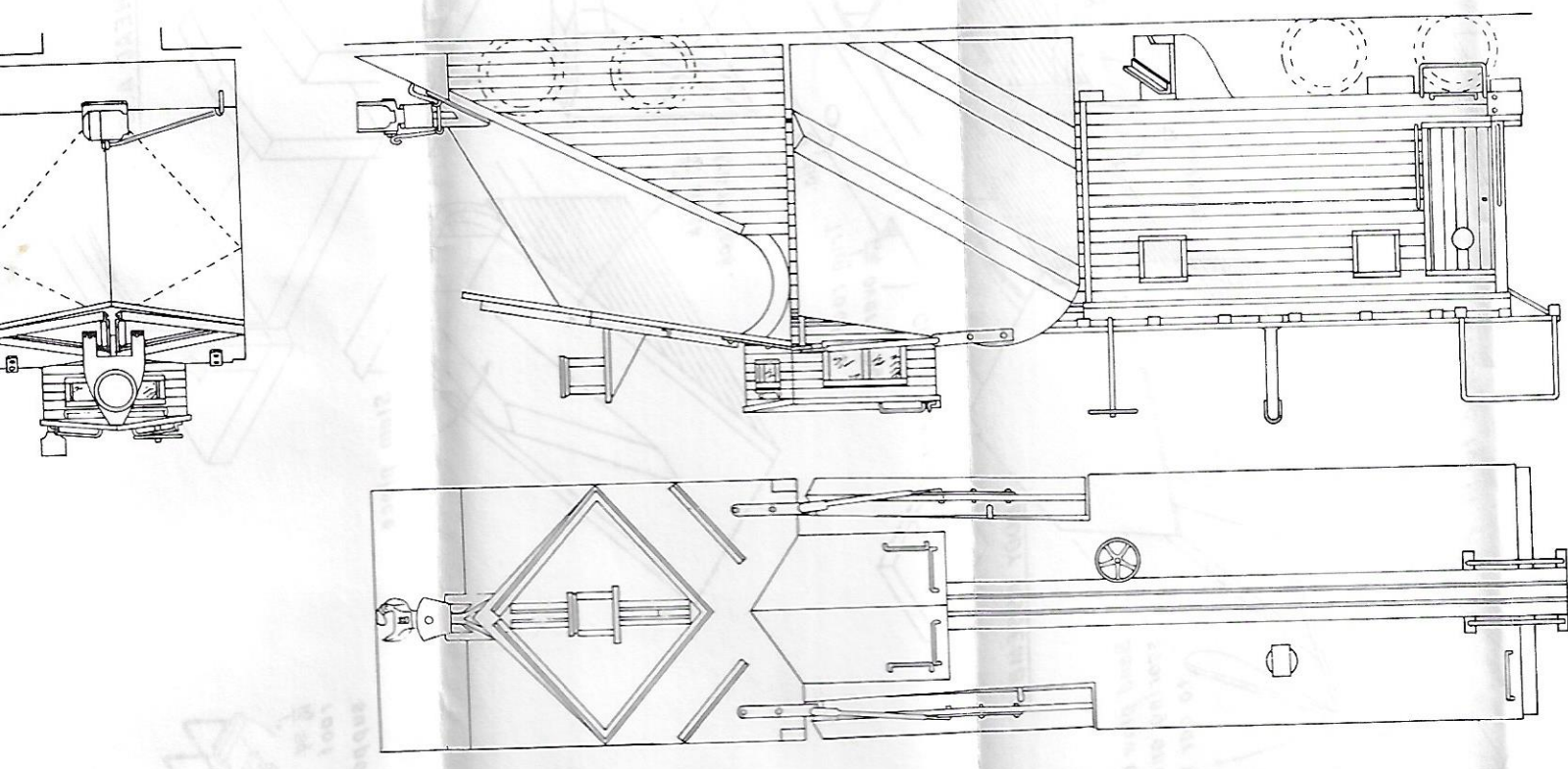


BOX 425 METHUEN, MASS. 01844

NORTHEASTERN SCALE MODELS INC.

BOSTON & MAINE SNOWPLOW

A QUALITY HO KIT

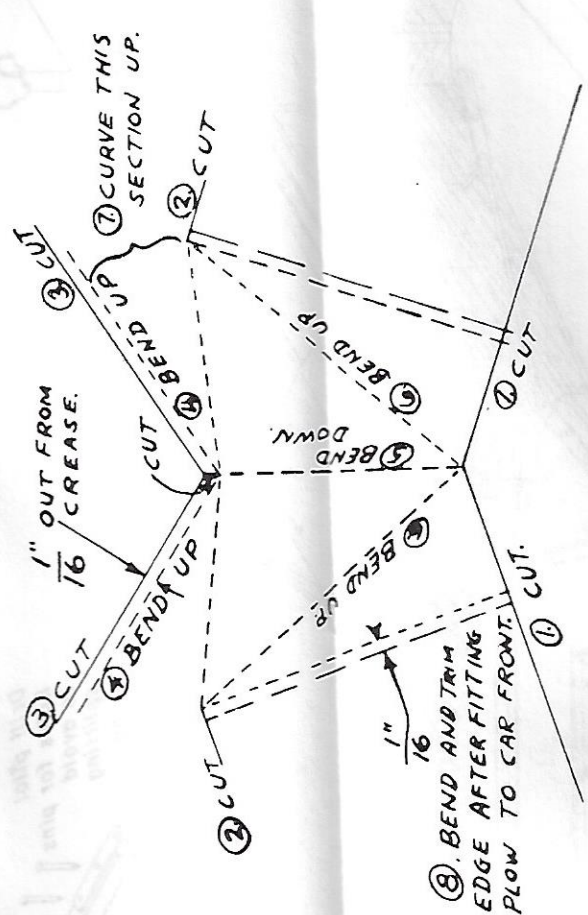


END BULKHEAD. Add door trim. Make up BED
 ndly. SIZES and CUPOLA PARTS. Make up BODY
 clal care when fitting PLOW to car front.
 nd CUPOLA FLOOR BLOCK.
 s strip into lengths with 3 holes in each. Cement
 The care with which these hinge strips are fitted will
 ed car.
 rk is the addition of details and hardware. Con-
 ticulars. Use the larger wire for roof walk
 el shaft, wing hinge pins, wing push rods; the
 her parts.
 d paint the car before attaching wings.
 re: all scribed parts, caboose red, all other
 ept smoke jack which is aluminum.

HM-2
 Russell Snowplow

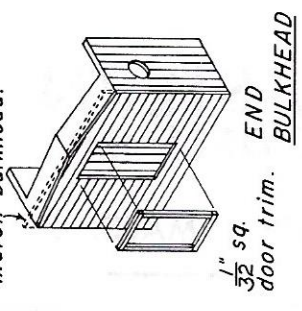
Forming the aluminum plow front is not difficult, provided that the sequence of operations outlined is followed. The aluminum is very soft and easily marred, so be careful not to stretch it or mar it with fingernails, etc.

The drawing is full size. We suggest that you cut it out and practice on it before working with the aluminum.

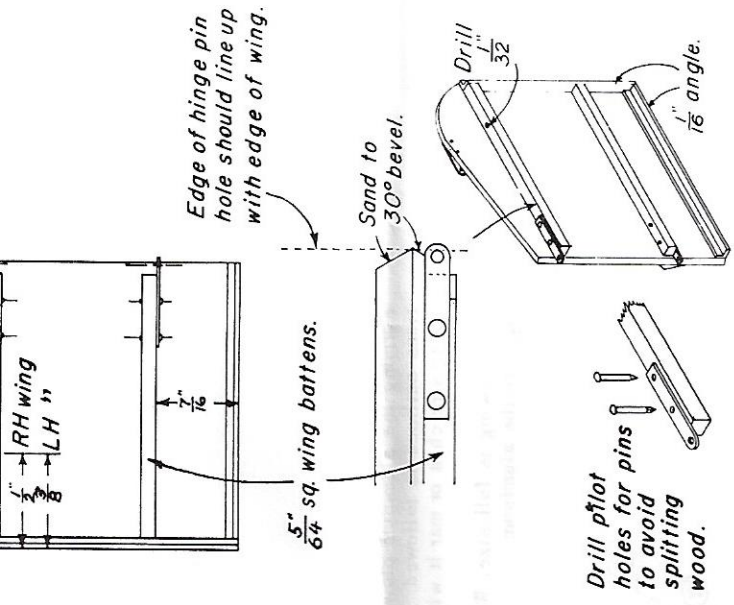
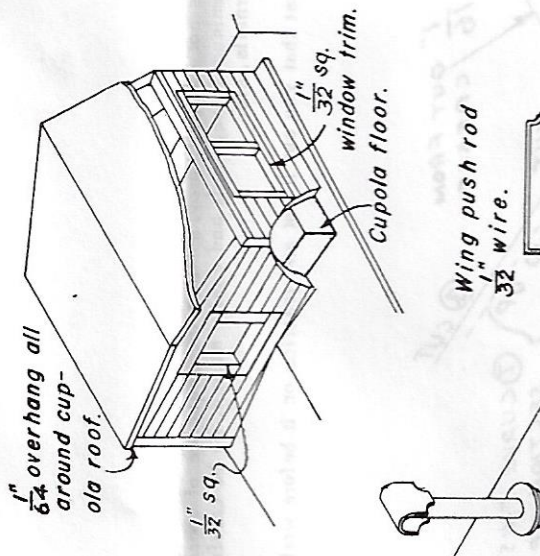
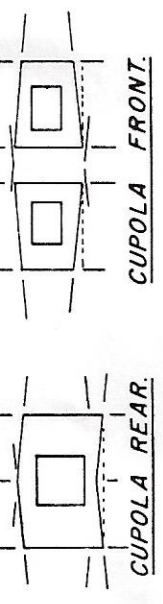
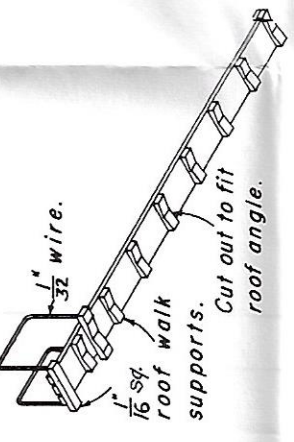
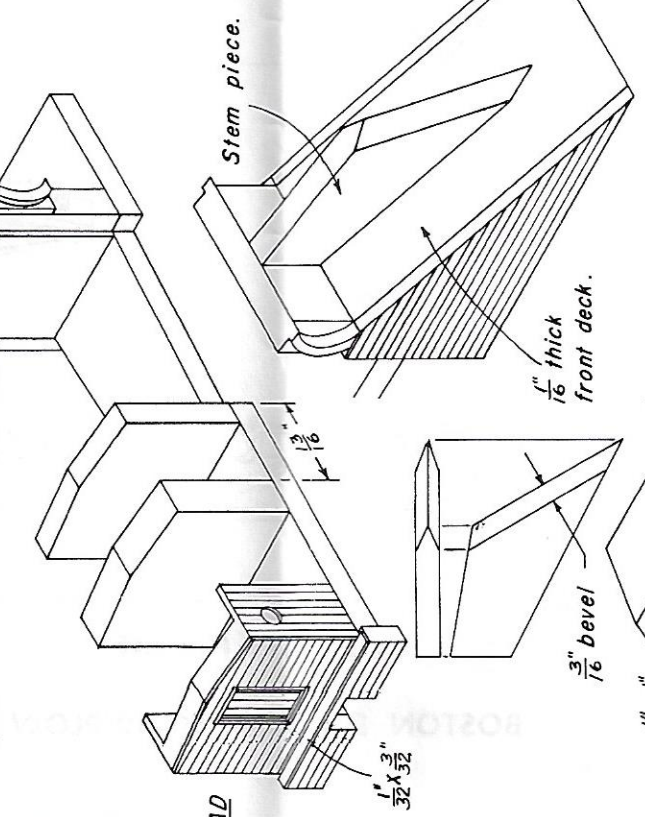


If you spoil the plow front, send to Northeastern Scale Models for another at no charge.
 Northeastern can also supply the plow front, all formed and trimmed for 50¢, postpaid.

match bulkhead.



BED & BULKHEAD ASSEMBLY.



Drill pilot holes for pins to avoid splitting wood.

Leave 5/8 sq sq wing battens slightly longer than necessary. Cement and pin hinges in place before fitting battens to wing.

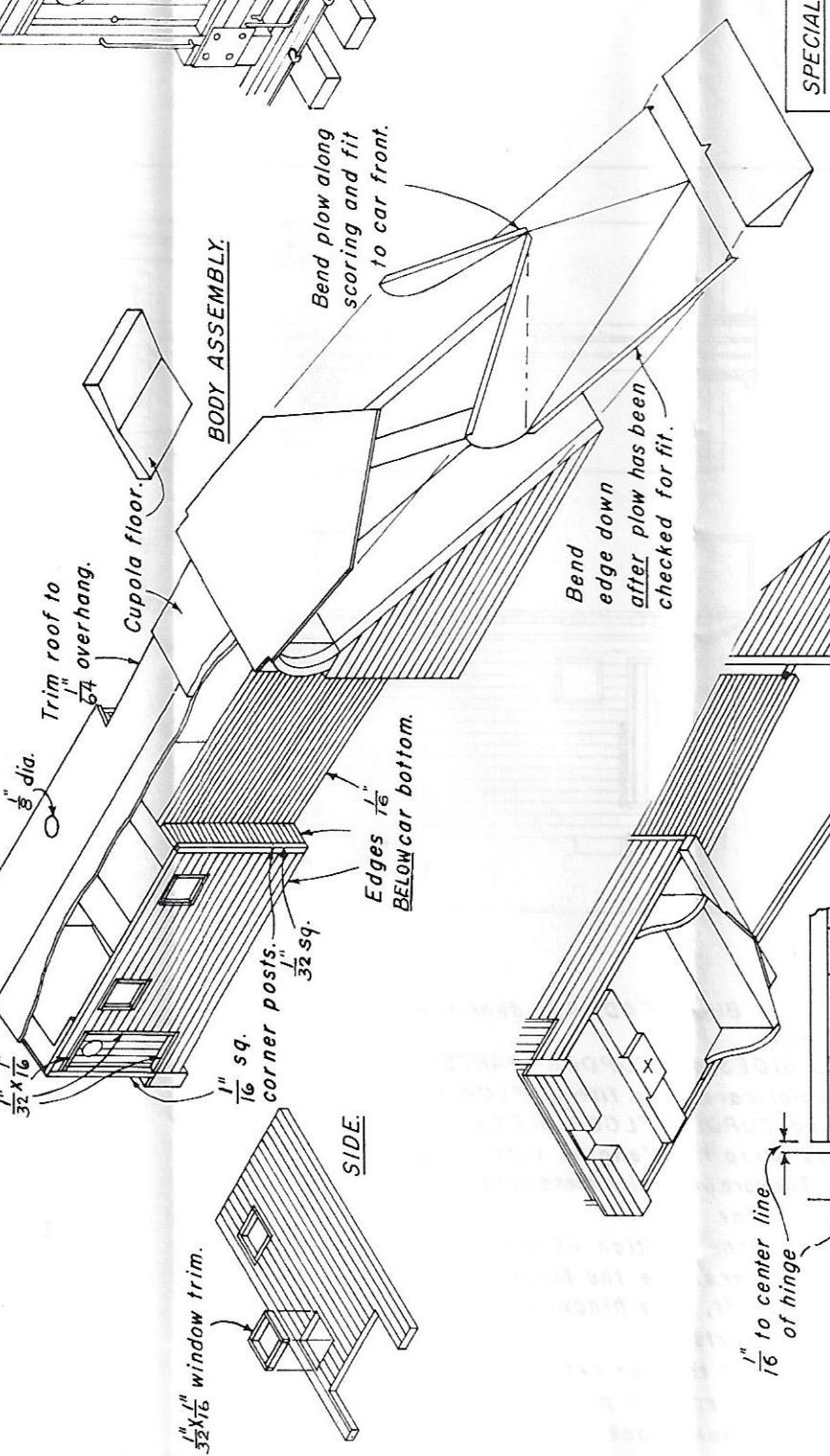
Flatten after bending.

WING HINGEPIN.

3/8 angle.

Wing push rod 1/2 wire.

BODY ASSEMBLY.



Bend plow along scoring and fit to car front.

Bend edge down after plow has been checked for fit.

Edges 1/2 BELOW car bottom.

SIDE

1/2 x 1/2 window trim.

1/2 to center line of hinge

SPECIAL INSTRUCTIONS.
Locate the rear balster 1/2 farther forward.

1/2 thick FLANGER.