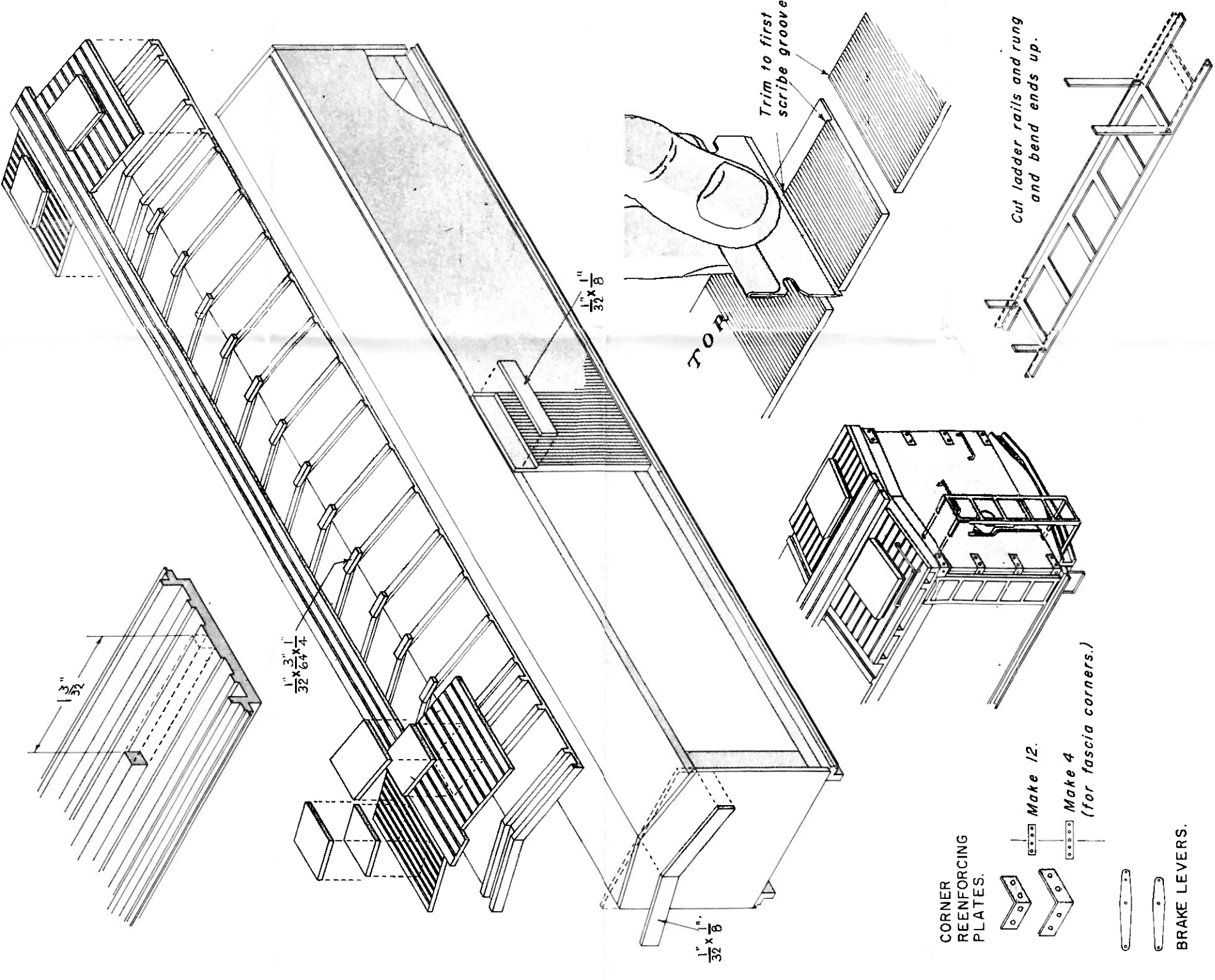
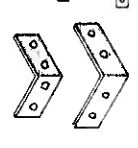


GREAT NORTHERN EXPRESS REFRIGERATOR CAR.
HO GAUGE KIT.
DESIGNED AND MADE BY
NORTHEASTERN SCALE MODELS, INC.



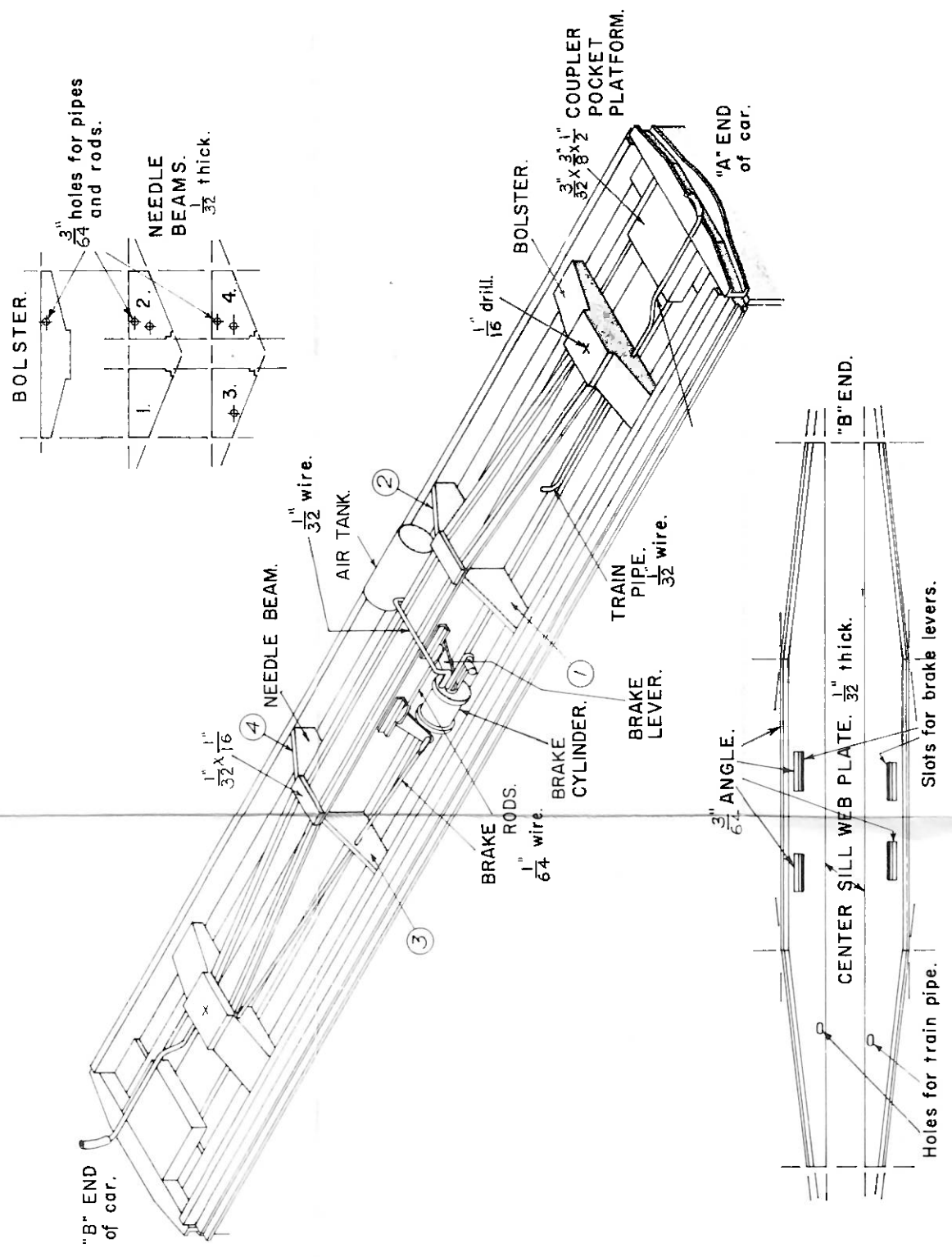
CORNER REINFORCING PLATES.



Make 12.

Make 4 (for fascia corners.)

BRAKE LEVERS.



PRELIMINARY Do these jobs FIRST for smooth assembly.

1. Cut away $1\frac{3}{32}$ section of center sill at each end of floor piece.
2. Make needle beams and drill for air pipe and brake rods.
3. Drill bolsters for air pipe and king pins.
4. Cut out center sill web plate. Cut slots for brake levers and holes for train pipe. Cement angle stock where indicated.
5. Lay doors on flat surface and trim to first scribe, using a single edged razor blade. Similarly, trim sides next to door. Do not trim sides to exact length at this time.
6. Drill $\frac{3}{32}$ hole in "B" end for hand brake.
7. Cut brake levers from brass strip.
8. Cut and bend corner reinforcing plates.
5. Sand $\frac{1}{16}$ wide flats on tops of roof ribs and cement $\frac{3}{32} \times \frac{1}{16}$ roof walk supports to roof ribs. Note that the four ribs at each end are higher to support the icing platforms. Sand the tops of these supports just enough to line up with the roof walk supports.
6. Cement $\frac{3}{8} \times \frac{1}{2}$ end and side fascias in place.
7. Cement roof walk, icing platforms, ice hatches and hatch covers in place.
8. Assemble underframe and brake system. See drawing for details.
9. Attach ladders, grabirons, door accessories and other hardware.
10. Paint car body Pullman green; roof and underframe dull black.
11. Because of the variety and strong individual preference regarding couplers, none are included in the kit.
12. Use standard passenger trucks.

ASSEMBLY.

1. Cement the floor, inner roof and ends together. Trim tops of ends flush with roof.
2. Cement doors to car body, centering them exactly. Cement in $\frac{3}{32} \times \frac{1}{8}$ strip in rabbet at top of door.
3. Trim sides to fit between doors and ends. Cement in place. Avoid touching the painted surfaces.
4. Cement outer roofs in place, making certain that ends have equal overhang and the ridge is centered exactly.