

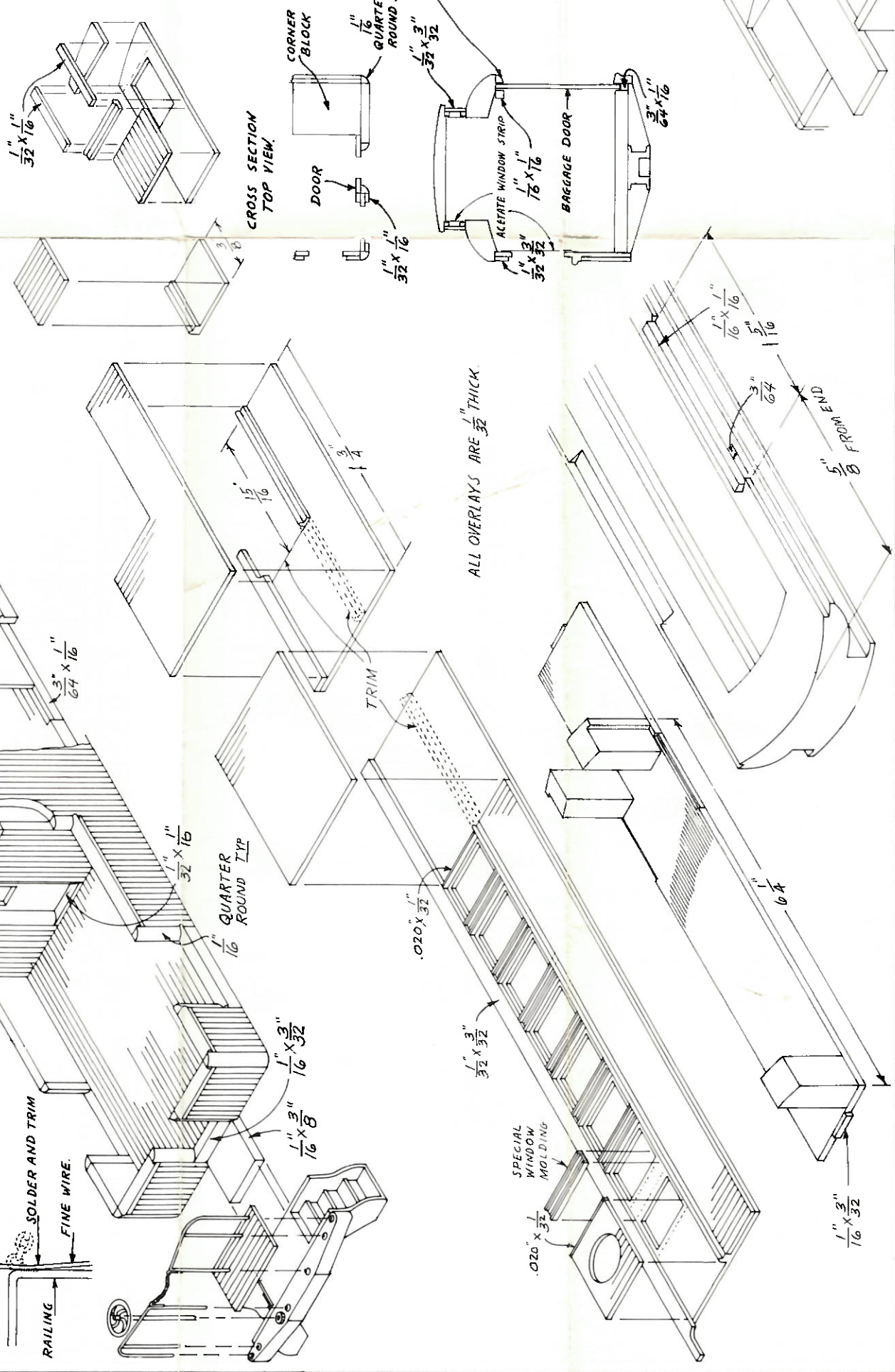
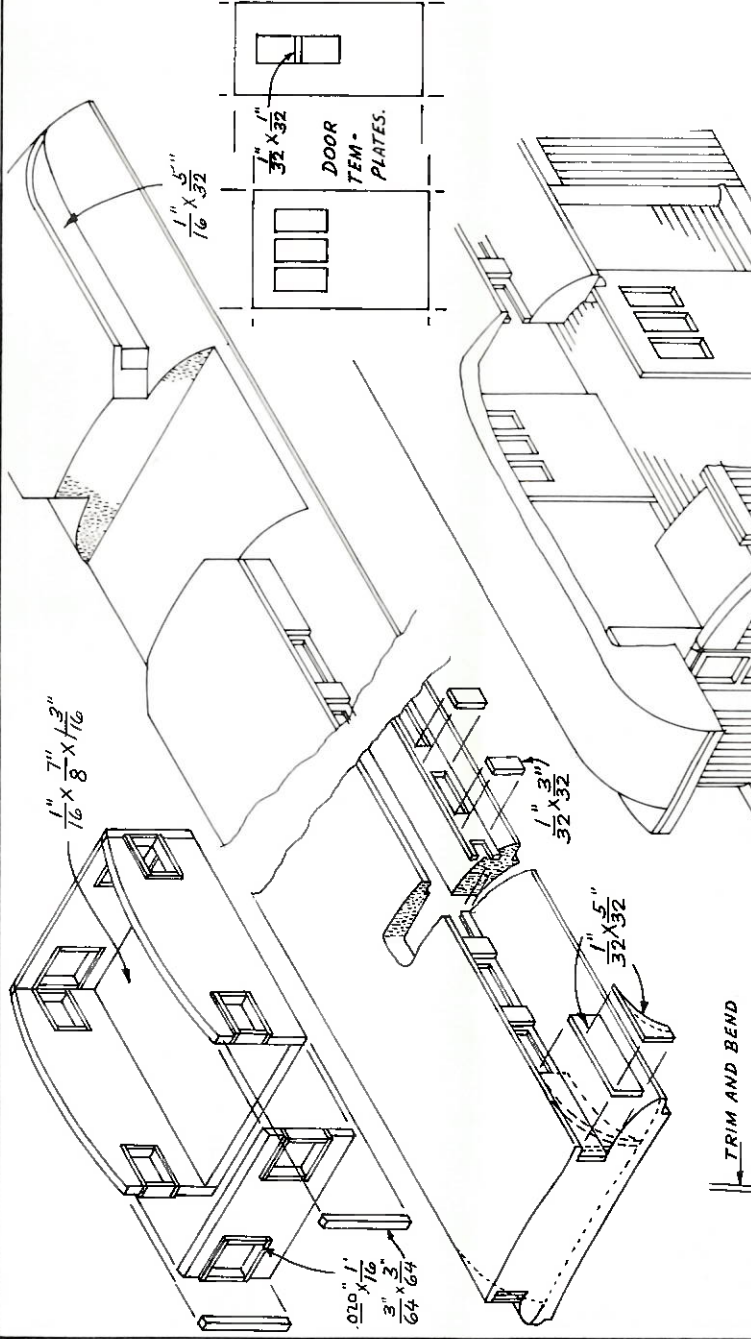
This car should be constructed in sub-assemblies: floor section w/corner blocks, side panels, roof, cupola and window end.

The roof is supplied routed for open clerestory windows. Because a completely cut out clerestory section would be too fragile for shipping and storage, the window area has a thin web which is easy to trim away, using a single edge razor blade or model knife.

All the roof inlays should be fitted and cemented in place before assembly of the roof ends. The roof should be completely finished before attaching to the corner blocks.

As with all models, if a part is missing or defective, or if you spoil a part through construction error, send to NORTHEASTERN SCALE MODELS, Inc., Ballard Vale, Mass. 01810, for free replacement.

This kit was designed and made by NORTHEASTERN SCALE MODELS, Inc.



WORKING COMBINE / CABOOSE

NORTHEASTERN SCALE MODELS, INC.
 BOX 425
 METHUEN, MASS. 01844

STRUCTURAL SHAPES

	1. MM. .040	15 MM. 3/16	2. MM. 1/16	3. MM. 1/8	4. MM. 5/32	5. MM. 3/16	5. MM. 1/4	8. MM. 5/16	10. MM. 3/8	10. MM. 1/2
ANGLES	L .10	L .10	L .10	L .12	L .12	L .15	L .15	L .20	L .25	L .30
TEES	L .10	L .10	L .10	L .12	L .12	L .15	L .15	L .20	L .25	L .30
ZEEES	L .10	L .10	L .10	L .12	L .12	L .15	L .15	L .20	L .25	L .30
HAT SECTION	L .10	L .10	L .10	L .12	L .12	L .15	L .15	L .20	L .25	L .30
CHANNELS	L .10	L .10	L .10	L .12	L .12	L .15	L .15	L .20	L .25	L .30
COLUMNS (Wide flange beams)	L .12	L .12	L .12	L .15	L .15	L .20	L .20	L .25	L .30	L .35
I BEAMS	L .12	L .12	L .12	L .15	L .15	L .20	L .20	L .25	L .30	L .35
QUARTER ROUND	L .10	L .10	L .10	L .12	L .12	L .15	L .15	L .20	L .25	L .30
DOOR TRACK	L .10	L .10	L .10	L .12	L .12	L .15	L .15	L .20	L .25	L .30
FLANGES	L .10	L .10	L .10	L .12	L .12	L .15	L .15	L .20	L .25	L .30

SIDING MATERIALS

CLAPBOARD SIDING	LAP SPACING	1/32	3/64	1/16	3/32	1/8	1/4	3/8	1/2	3/4	1	1 1/2
	SHEET SIZE	3 1/2" x 24"										
		1" thick 85¢ per sheet										
		3/32" thick 85¢ per sheet										
BOARD & BATTEN (CAPPED) SIDING	CAP SPACING	3/32	1/8	1/4	3/8	1/2	3/4					
	SHEET SIZE	3 1/2" x 24"										
		1" thick 85¢ per sheet										
SCRIBED SHEATHING	SCRIBE SPACING	.025	1/32	1/16	3/64	1/32	1/16	3/32	1/8	1/4	3/8	1/2
	SHEET SIZE	3 1/2" x 24"										
		1/32" thick 75¢ per sheet										
		1/16" thick 85¢ per sheet										
CORRUGATED SIDING	CORR. SPACING	.040	1/16	3/32	1/8							
	SHEET SIZE	3 1/2" x 24"										
		.040 thick 75¢ per sheet										
CONCRETE WITH FORM IMPRINT	FORM BOARD WIDTH	1/16	1/8	3/16								
	SHEET SIZE	3 1/2" x 24"										
		.040 thick 75¢ per sheet										
BRICK red, yellow	HO	75¢ per sheet										
CONCRETE BLOCK	S	75¢ per sheet										
CINDER BLOCK	O	75¢ per sheet										
		Sheet size 3 1/2" x 12"										
		TERRA COTTA GRAY GREEN THREE COLOR										
		Sheet size 3 1/2" x 12"										
		FLAGSTONE Silk screen printed on 1/16" Basswood										
		HO-S S-O 75¢ per sheet 75¢ " " \$1.20 " "										

NORTHEASTERN SCALE MODELS

STRIP AND SHEET WOOD
STRUCTURAL SHAPES
SIDING MATERIALS
CAR PARTS

The complete NORTHEASTERN line of wood model building materials is listed and illustrated full size on this page.

Quality and precision are the same as the parts in the kits.

See your hobby dealer for NORTHEASTERN products. If he can't supply your needs, order direct giving us his name and address.

NORTHEASTERN SCALE MODELS, Inc.

Box 100

Ballard Vale, Mass. 01820

Phone 617 - 475-1902

WOOD STRIPS AND SHEETS

	1. MM. .040	1.5	2.0	3.0	4.0	5.0	6.0	8.0	10.0	12.5	25.0	50.0
5	.02	.02	.02	.03	.04	.05	.06	.08	.10	.12	.25	.50
7.5	.02	.02	.02	.03	.04	.05	.06	.08	.10	.12	.25	.50
10	.040	.02	.02	.03	.04	.05	.06	.08	.10	.12	.25	.50
1.5	.02	.02	.02	.03	.04	.05	.06	.08	.10	.12	.25	.50
2	.02	.02	.02	.03	.04	.05	.06	.08	.10	.12	.25	.50
3	.02	.02	.02	.03	.04	.05	.06	.08	.10	.12	.25	.50
4	.02	.02	.02	.03	.04	.05	.06	.08	.10	.12	.25	.50
5	.02	.02	.02	.03	.04	.05	.06	.08	.10	.12	.25	.50
6	.02	.02	.02	.03	.04	.05	.06	.08	.10	.12	.25	.50
8	.02	.02	.02	.03	.04	.05	.06	.08	.10	.12	.25	.50
10	.02	.02	.02	.03	.04	.05	.06	.08	.10	.12	.25	.50
12.5	.02	.02	.02	.03	.04	.05	.06	.08	.10	.12	.25	.50
25	.02	.02	.02	.03	.04	.05	.06	.08	.10	.12	.25	.50
50	.02	.02	.02	.03	.04	.05	.06	.08	.10	.12	.25	.50

All items in this catalog are normally supplied in Basswood. We can also supply many sizes in American Holly, Mahogany and Black Walnut at 50% over listed prices. See shaded sections for availability.

BASSWOOD
BASSWOOD AMERICAN HOLLY
BASSWOOD AM HOLLY
BLACK WALNUT
MAHOAGANY

ROOFS and FLOORS

OVER-HANGING	TT	HO	S	O
RECESSED	.45	.60	.75	.95
CABOOSE	.45	.60	.75	.95
REFRIGERATOR	.45	.60	.75	.95
HOLLOW CABOOSE	.50			
INNER ROOF	.35	.55	.70	.85
FREIGHT FLOOR	.15	.25	.30	.40
END BLOCK	.20	.35	.40	.50
CLERE-STORY PASSENGER	.75	.90	1.50	
PASS. FLOOR	.25	.25	.30	.30
STREAM-LINE ROOF	.65			
STREAM-LINE FLOOR	.75			

MISCELLANEOUS CAR PARTS	TT	HO	S	O
COACH SIDING WITH INTEGRAL BELT RAIL			.35	.45 .55
CENTER SILLS SOLID FREIGHT	.10	.15	.20	.30
GROOVED		.20	.25	.35
DEEP FISH BELLY	.15	.20	.25	.35
PASSENGER		.30		
ROOF WALK	.10	.10	.15	.20
LATERAL ROOF WALKS	.15	.15	.20	.25
BOLSTERS	.10	.10	.10	.15
WINDOW MOLDING	.15			
CORNER POST	.10			
BELT RAIL	.10			
THRESHOLD	.10			
PREFORMED GRABIRONS	EYE PINS			
	HO GAUGE 7 32" LONG S GAUGE 9 32" LONG PRICE \$1.00 PER GROSS			
	.018 BRASS WIRE 3/4" LONG EYE TAKES 1/32" WIRE PRICE \$1.00 PER GROSS			

Unless Otherwise Noted All Forms Listed On This Page Are 24" Long