

MADE IN MEXICO
MANTUA

ALL 6 FIT

RAIL LINE NIBRA
ROUNDHOUSE

The new "6-FIT" coupling packs will accept any of these popular models of HO compatible and, when used with one of the NIBRA types, will permit coupling with any equipment using any NIBRA coupler.



MADE IN MEXICO
MANTUA

RAIL LINE NIBRA
ROUNDHOUSE

Use as shown here; the regular design will fit the standard HO coupler. The "6-FIT" design will accept any of the NIBRA types.

RAIL LINE NIBRA

For use with the Rail Line NIBRA coupler, remove side boards. "6-FIT" - Mount pin on other side only if to be removed.



MANTUA

Trace the packet with NIBRA coupler, remove cover and use single pin. Pin and basket on the other side may be removed.

PLASTIC Car Boxes X-310 1.25 axle rail.
BRASS Car Boxes X-310 .70 pin.

© Northeastern Models, Inc.
Methuen, Mass.

WESTERN UNION MATERIAL CAR

DESIGNED AND MADE FOR BY
NORTHEASTERN SCALE MODELS, INC.

FROM

NORTHEASTERN SCALE MODELS, Inc.

BOX 425

METHUEN, MASS. 01844

HOW TO USE FLOQUIL MODEL RAILROAD COLORS

SELECTED BY AS THE BEST

Portions of this kit have been pre-painted with FLOQUIL MODEL RAILROAD COLORS. To obtain a perfect color match, use only Floquil Model Railroad Colors. Follow directions for application carefully.

THINNING
Floquil Model Railroad Colors may be thinned to any consistency. Thinning is required if the colors are to be used on a surface which has been previously painted with another color. Use 50% Floquil Glaze to insure perfect adhesion. Use only Floquil Di-sol for thinning and for cleaning your equipment.

BRUSH APPLICATION
Use colors thoroughly before and during use. Use a good grade, soft, water color brush. Wash brush with water after each use. Do not use the same brush for different colors liberally. F-L-C-4-W-B-G-3 on with light, quick strokes. Wash in one direction only.

AIR-BRUSH
Thin colors with approx. 25-40% Floquil Di-sol. Add 10% Floquil Glaze. Clean air-brush immediately after use with Floquil Di-sol.

SURFACES

METAL: For perfect adhesion on zinc, brass and other difficult surfaces, rubbin lightly with sandpaper before applying color or "pickle" 30-60 minutes in white vinegar - rinse completely in water - dry and clean with Di-sol. Baking is not required. However, for best results, bake with infrared lamp placed 6-8 inches from object. Bake 2-30 minutes, rotating object.

WOOD AND POROUS SURFACES: Finish with fine sandpaper and clean with Floquil Di-sol before painting. If preferred, prime with a solution of 50% Floquil Di-sol and 50% Floquil Glaze. Allow 4-6 hours between priming and painting.

FLOQUIL MODEL RAILROAD COLORS ARE AT YOUR DEALER IN A COMPLETE RANGE OF COLORS FOR ROLLING EQUIPMENT AND SCENERY.

Boxcar Red	Depot Olive Green	Refer Gray	METALLIC:
Boxcar Yellow	R.R. Maroon	Refer Olive Green	White
Boxcar Green	R.R. Purple	Refer Orange	Black
Concrete	R.R. Yellow	Refer Yellow	Brass
Earth	R.R. Blue	Refer Blue	Copper
R.R. Dk. Blue	R.R. Black	Refer Red	Gold
R.R. Lt. Green	Finish	Refer Black	Gun Metal
R.R. Dk. Green	Fullan Green	Refer Varnish	Silver
		Primer	

PRELIMINARY. Do these jobs FIRST for easy assembly.

1. Temporarily fasten the scribed inner floor and inner roof together and cut notches along the edges. These notches will be the door tracks. Check the depth of the notches so that they will be slightly deeper than the thickness of the doors.
2. Install windows in the openings in the painted sides. The plastic windows should fit INNO out.
3. Trim the center sill according to the template. Cut the brake lever slots and cement the $3/64$ " angles in place.

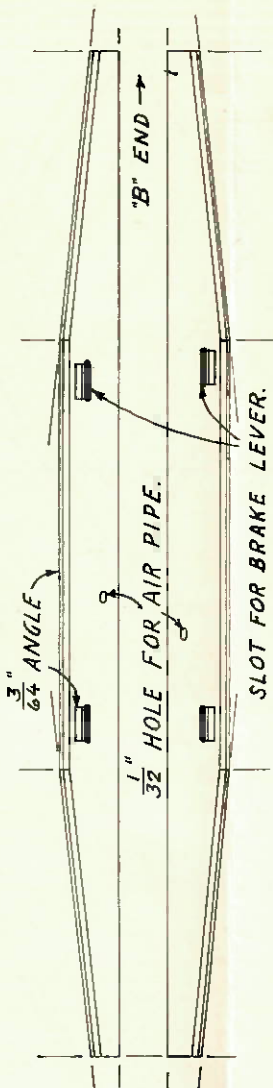
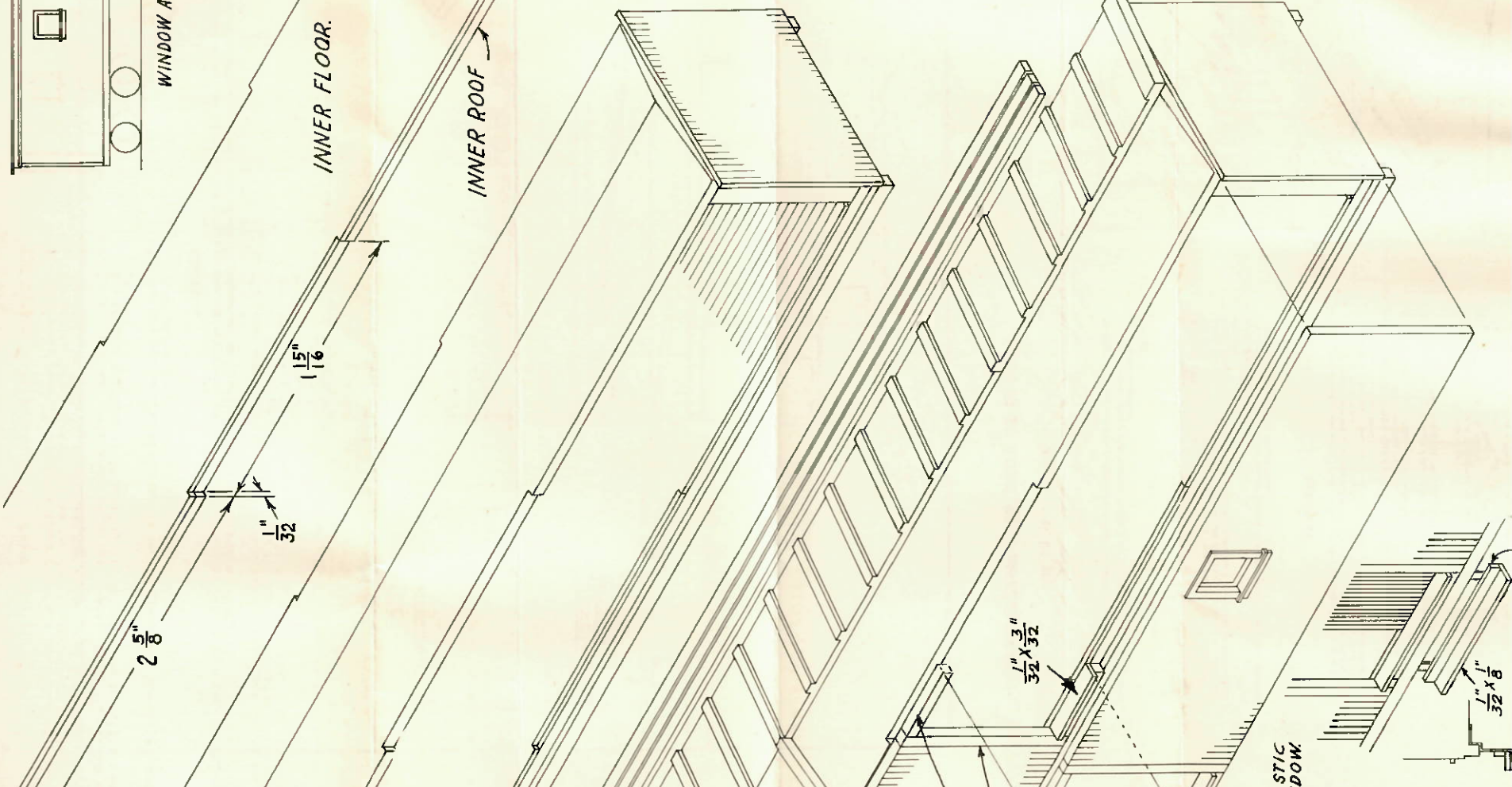
ASSEMBLY.

1. Cement the inner floor to the sub-floor, making sure that it is centered with the same space at each end. Attach ends and inner roof.
2. The sides are slightly over-size to allow for shrinkage during the shelf-life of the kit. Trim so that the gap at the door is $1/16$ ". Cement the sides in place, taking care that the door track is free of cement. Install the door frame. When cement is dry, check the doors for free sliding.
3. Install the end door. Do not attach the diaphragm at this time. Point the side doors and install. Trim the outer roof sections so that the overhang at the car ends is barely $1/32$ ". Cement to the inner roof, making sure that the doors are not cemented in the tracks.
4. Assemble underframe. Attach roof walks, side steps and diaphragm.
5. Install brake system, followed by end sills, grab irons and miscellaneous hardware.
6. Paint entire car Pullman green except for smoke jacks which are dull black. Although it was built in 1929, the particular car from which this kit was designed is lousy and new looking. A weather beaten appearance would be out of place for this car.
7. As with all models, if a part is missing or damaged, or if you spoil a part, write to MORTIMER SCALE MODELS, Inc., Ballard Vale, Mass. for free replacement.

WINDOW ARRANGEMENT ON REVERSE SIDE.

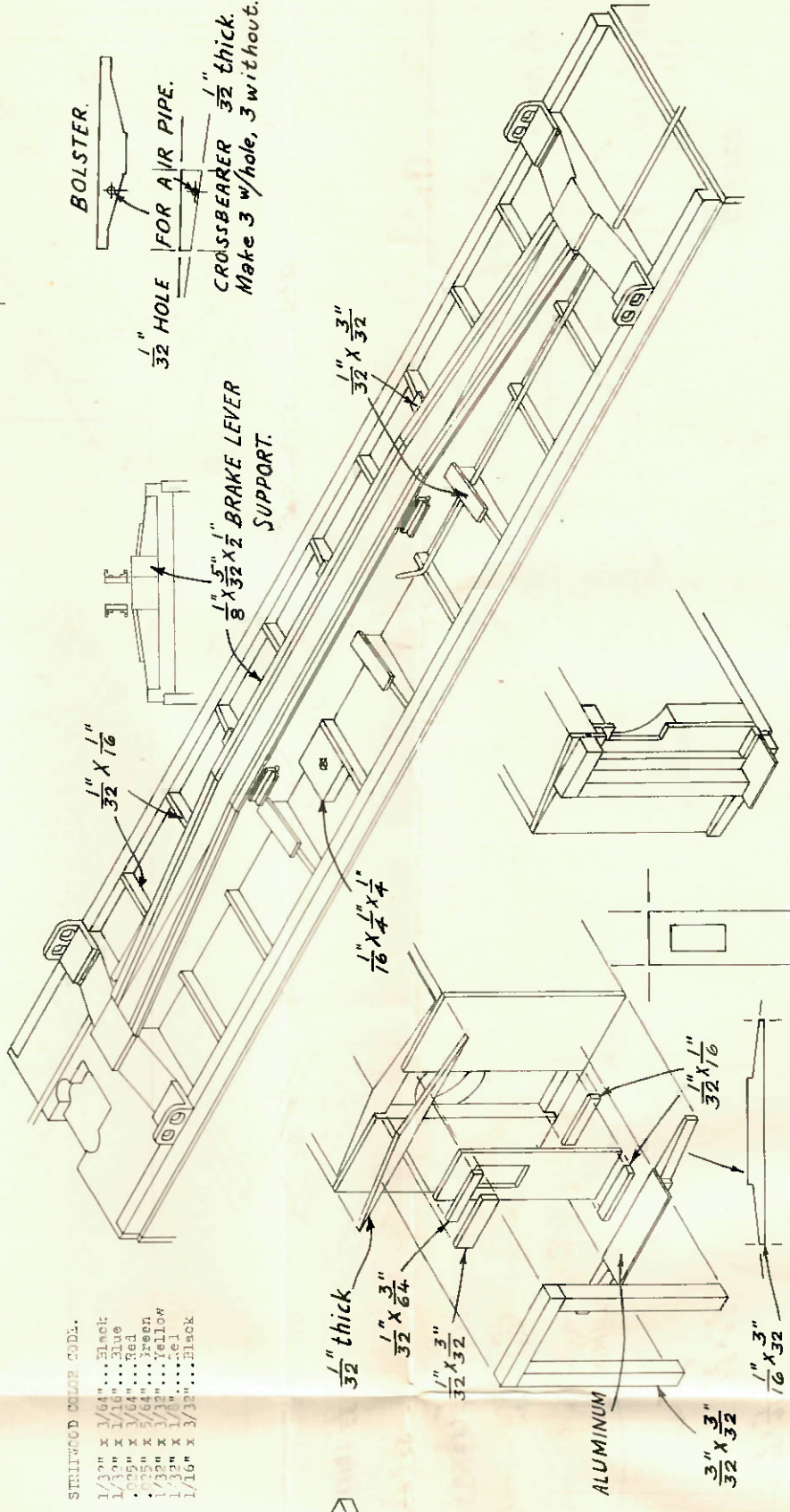
INNER FLOOR.

INNER ROOF.



STAINWOOD COLOR CODES.

1/32" x 3/64" ...	Black
1/32" x 1/16" ...	Blue
1/32" x 3/64" ...	Red
1/32" x 5/64" ...	Green
1/32" x 3/32" ...	Yellow
1/32" x 1/8" ...	Red
1/16" x 3/32" ...	Black



PLASTIC WINDOW.