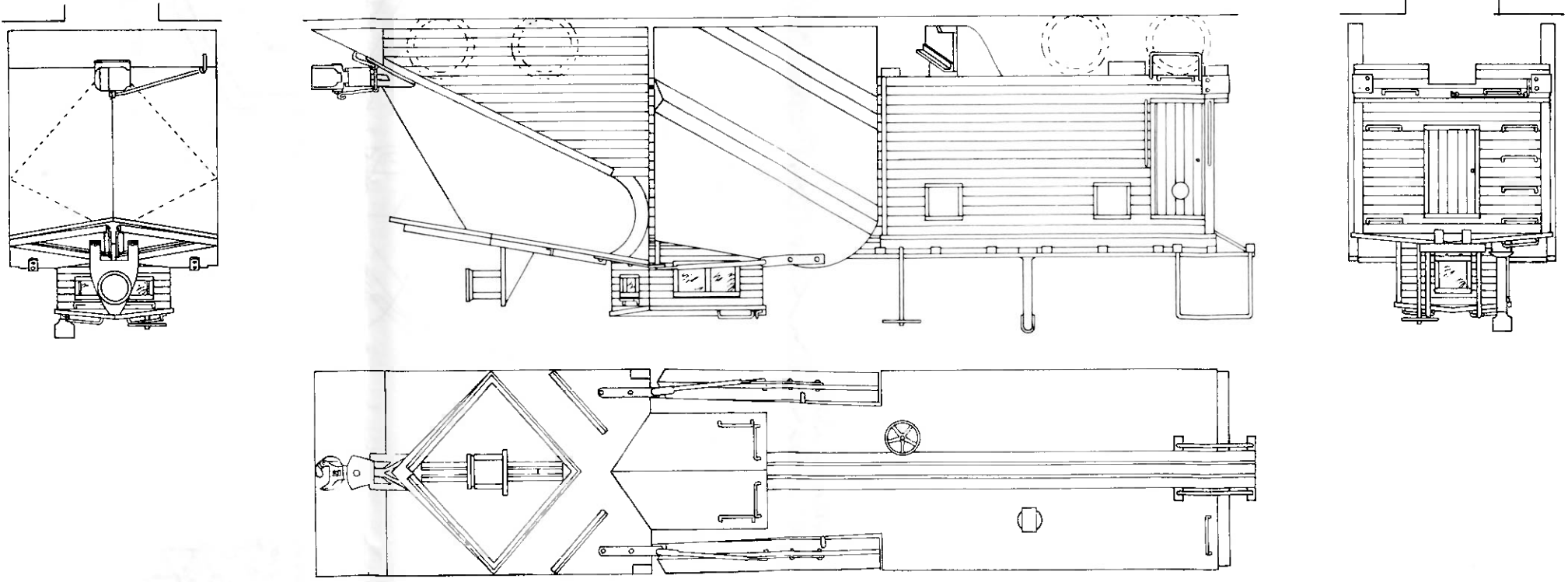


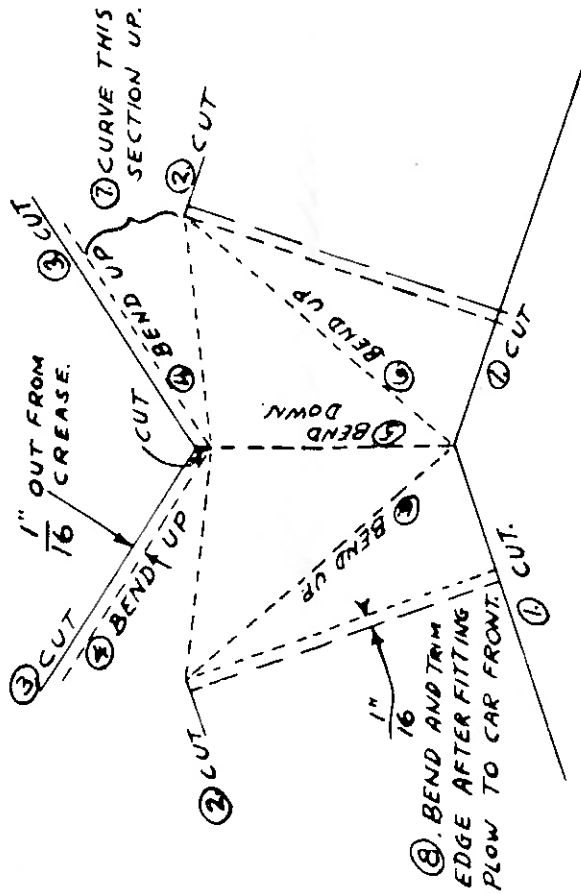
**A QUALITY HO KIT**  
**BOSTON & MAINE SNOWPLOW**  
**NORTHEASTERN**  
**SCALE MODELS INC.**  
 BOX 425 METHUEN, MASS. 01844

1. Cement sheathing to END BULKHEAD. Add door trim. Make up BED and BULKHEAD assembly.
2. Apply window trim to SIDES and CUPOLA PARTS. Make up BODY ASSEMBLY, using special care when fitting PLOW to car front.
3. Build CUPOLA around CUPOLA FLOOR BLOCK.
4. Cut perforated brass strip into lengths with 3 holes in each. Cement and pin to car body. The care with which these hinge strips are fitted will show up in the finished car.
5. The remainder of work is the addition of details and hardware. Consult drawings for particulars. Use the larger wire for roof walk handrails, brake wheel shaft, wing hinge pins, wing push rods; the finer wire for all other parts.
6. Completely finish and paint the car before attaching wings.
7. Prototype colors are: all scribed parts, caboose red; all other parts are black except smoke stack which is aluminum.



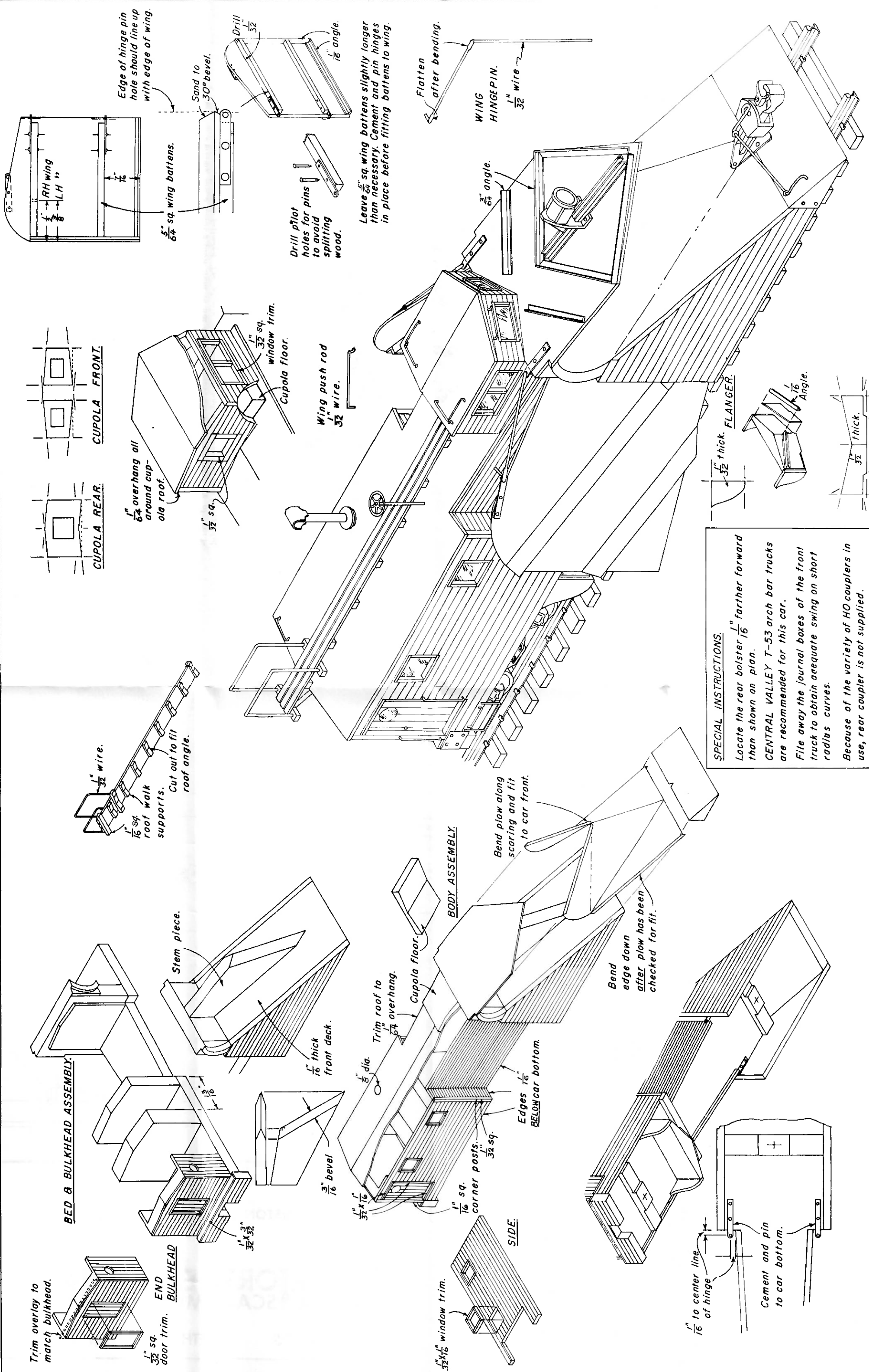
Forming the aluminum plow front is not difficult, provided that the sequence of operations outlined is followed. The aluminum is very soft and easily marred, so be careful not to stretch it or mar it with fingernails, etc.

The drawing is full size. We suggest that you cut it out and practice on it before working with the aluminum.



If you spoil the plow front, send to Northeastern Scale Models for another at no charge.

Northeastern can also supply the plow front, all formed and trimmed for 50¢, postpaid.



**SPECIAL INSTRUCTIONS.**  
 Locate the rear bolster  $\frac{1}{16}$ " farther forward than shown on plan.  
 CENTRAL VALLEY T-53 arch bar trucks are recommended for this car.  
 File away the journal boxes of the front truck to obtain adequate swing on short radius curves.  
 Because of the variety of HO couplers in use, rear coupler is not supplied.