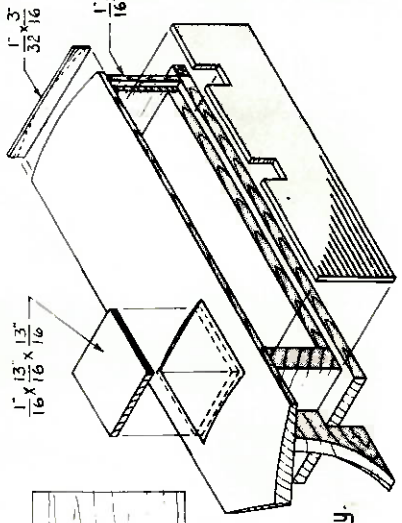
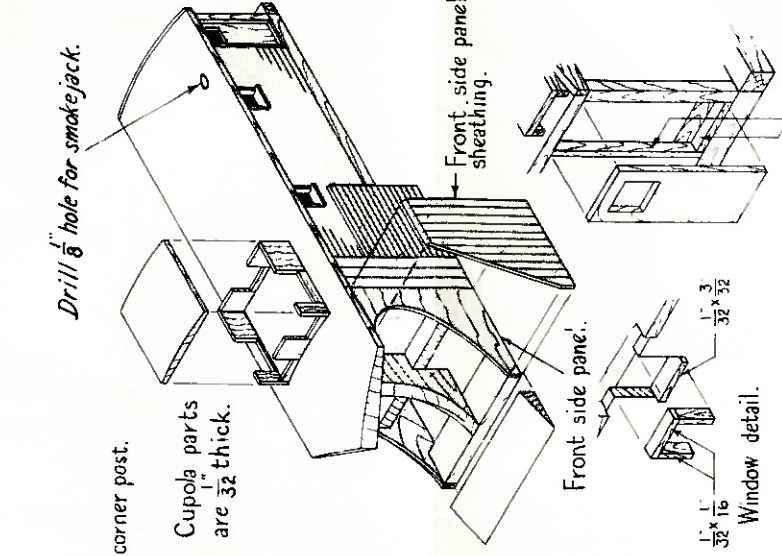


① Bevel both sides of curved edge of stem piece.

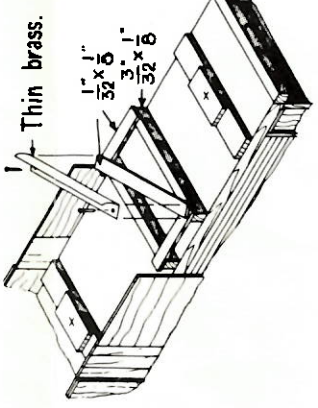


② Assemble basic body.

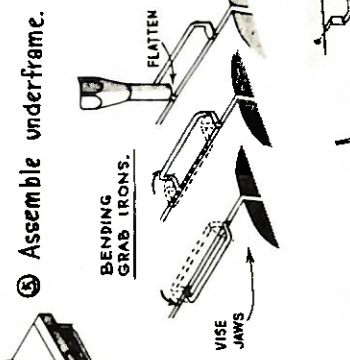


③ Add front side panels, wings, doors, windows and cupola parts. Cement front side panel sheathing in place, trim to same contour as front side panels and bevel to take wedge sheathing.

④ Cut out wedge sheathing, bevel leading edge and carefully fit to plow. Dampening the material slightly will make forming easier. Cement in place, using small clamps or pins to hold the parts while drying.

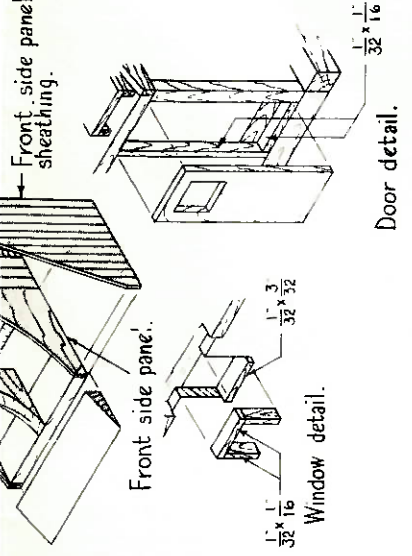


⑤ Assemble underframe.



⑥ Form wire parts and attach to car. Grab irons may be simple staples or formed as shown for a super detailed model. B & M's prototype is painted boxcar red except as noted below.

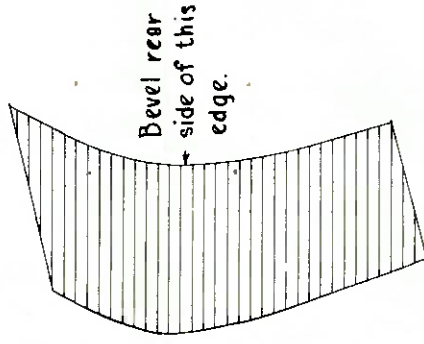
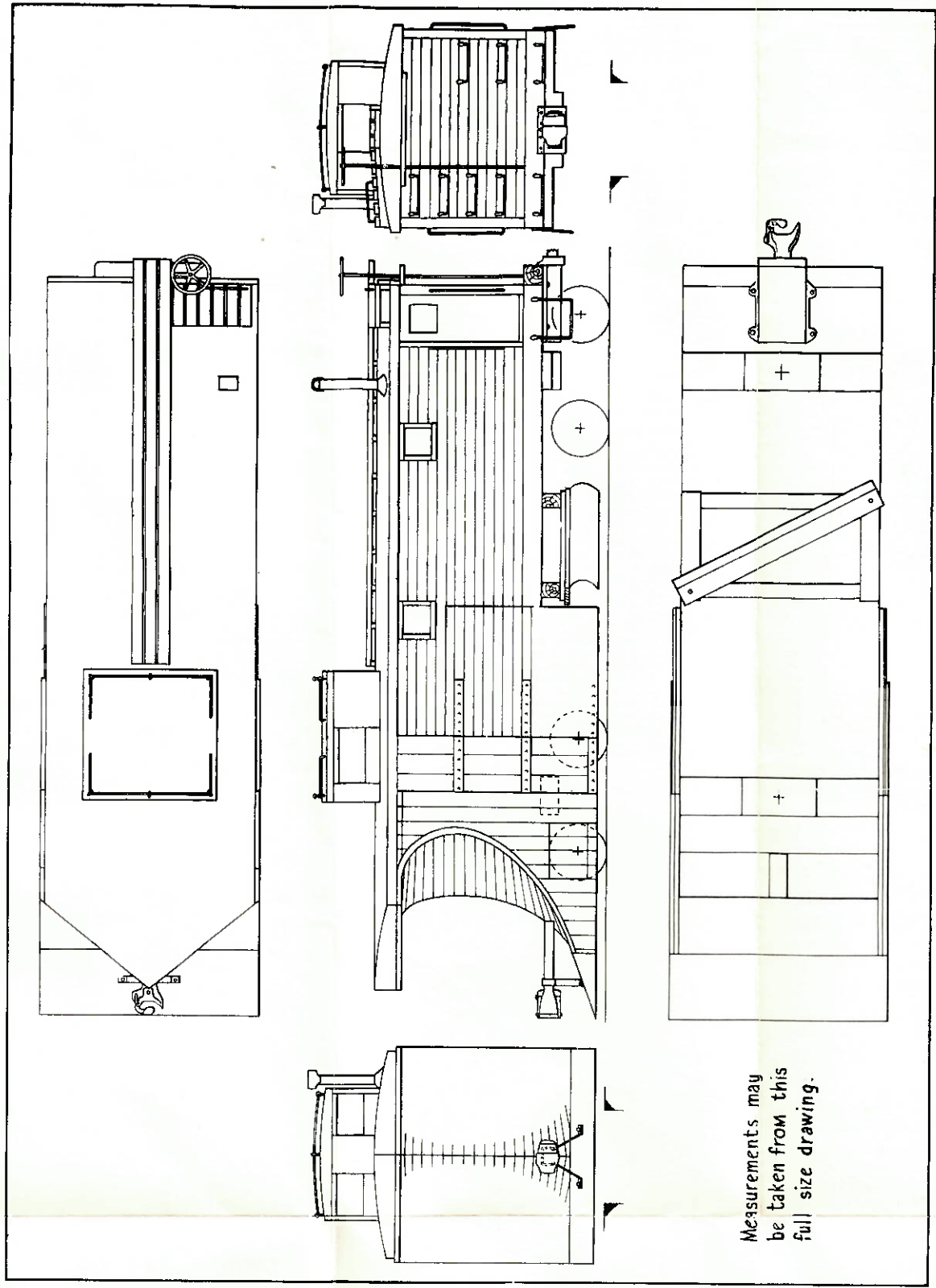
Drill 1/8" hole for smokejack.



Door detail.

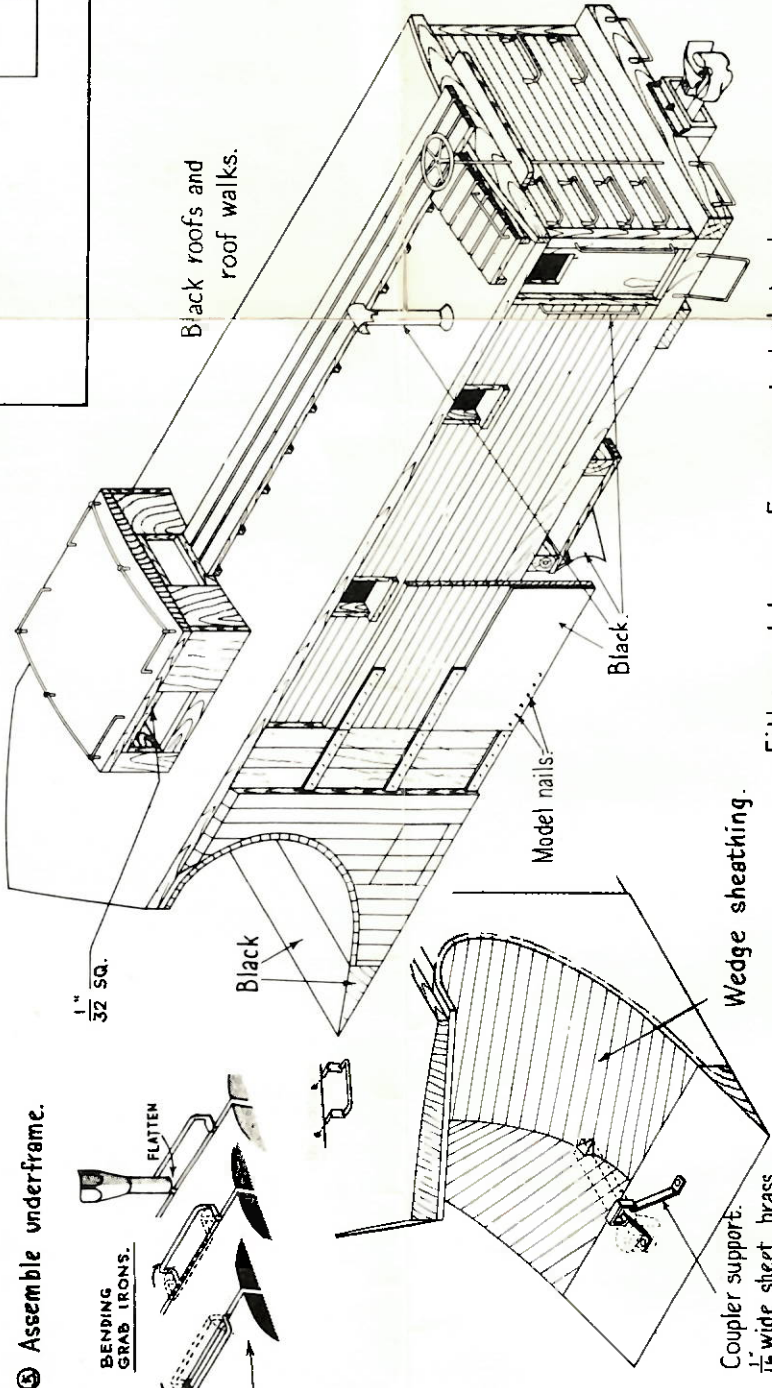
Window detail.

Measurements may be taken from this full size drawing.



WEDGE SHEATHING

Use this full size template to make one each, right and left, using 3/32" thick scribed material.



Either arch bar or Fox pressed steel trucks are correct for this type of car. The prototype uses Fox pressed steel trucks.

A QUALITY HO KIT
BOSTON & MAINE SNOW PLOW

NORTHEASTERN
SCALE MODELS INC.

BOX 425 METHUEN, MASS. 01844