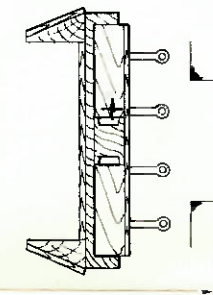
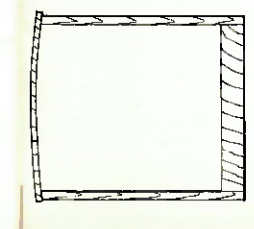
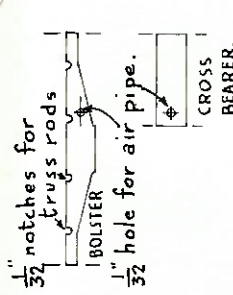
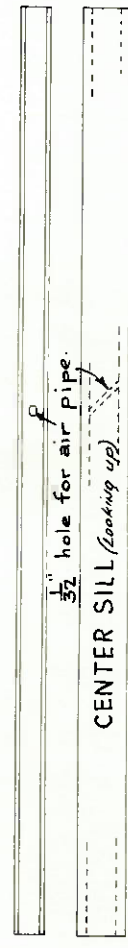
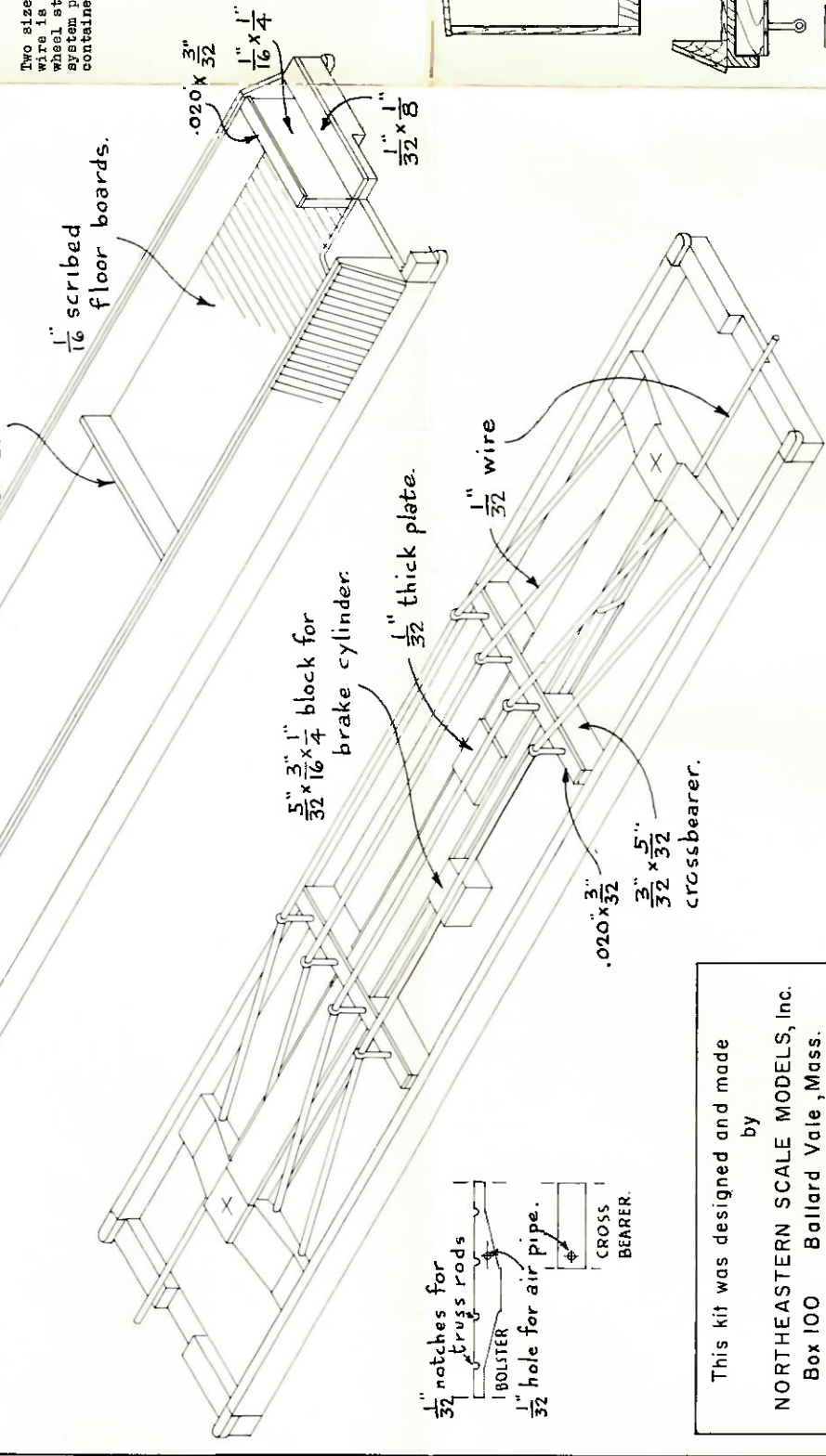


Two sizes of wire are supplied. The thicker wire is for truss rods, air pipe and brake wheel shaft. The finer wire is for brake system parts and lift loops on the larger containers.

Start construction by cementing the triangular section side members to the sub floor. The 1/16" scribed floor boards fit between these side members.  
 Only the floor boards are 1/16" scribed. All other scribed parts have 1/64" scribe spacing. Scribed parts are cut to accurate length (along the scribing), but are oversize across the scribing and must be trimmed to match the plan.  
 Be sure to groove and drill bolsters, crossbearers and center sill before cementing in place.



Paint entire car Tuscan red. Allow plenty of drying time before applying decals. Use of Walthers Solvaset will sink the decal film into the scribing. Because of the wide variety of couplers in use, choice of these is left to the individual hobbyist.

In case a part is missing or defective, or if you spoil a part, send to Northeastern Scale Models, Inc., Ballard Vale, Mass. for free replacement.

A QUALITY HO KIT  
 N.Y.C. CONTAINER CAR.  
**NORTHEASTERN**  
 SCALE MODELS INC.  
 BOX 425 METHUEN, MASS. 01844

This kit was designed and made by  
 NORTHEASTERN SCALE MODELS, Inc.  
 Box 100 Ballard Vale, Mass.