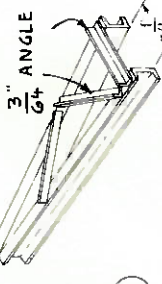


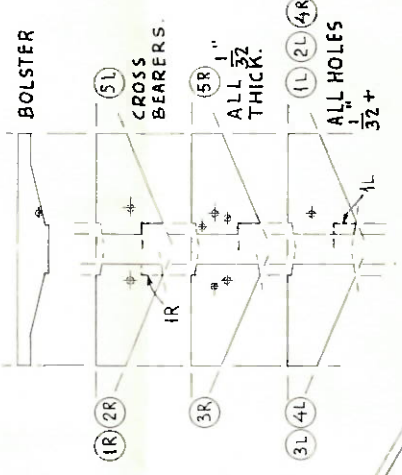
ALL CHANNEL $\frac{1}{8}$ "



CENTER BULKHEAD.

This kit was designed and made by
NORTHEASTERN SCALE MODELS
 Inc.
 P.O. Box 425 Methuen, MA 01844

TRIM AS NECESSARY TO CLEAR WHEELS.

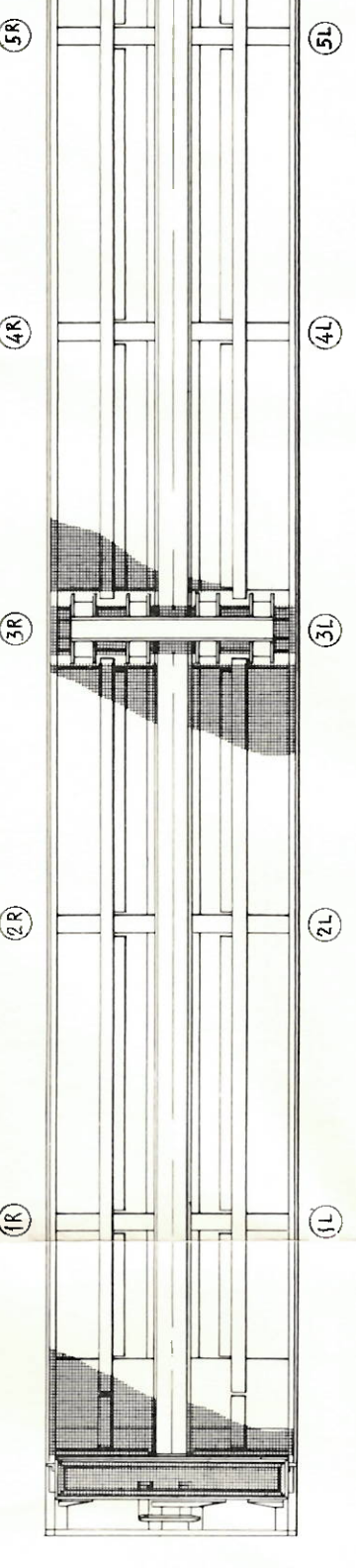


BOLSTER

(5L) CROSS BEARERS.

(5R) $\frac{1}{32}$ " ALL THICK.

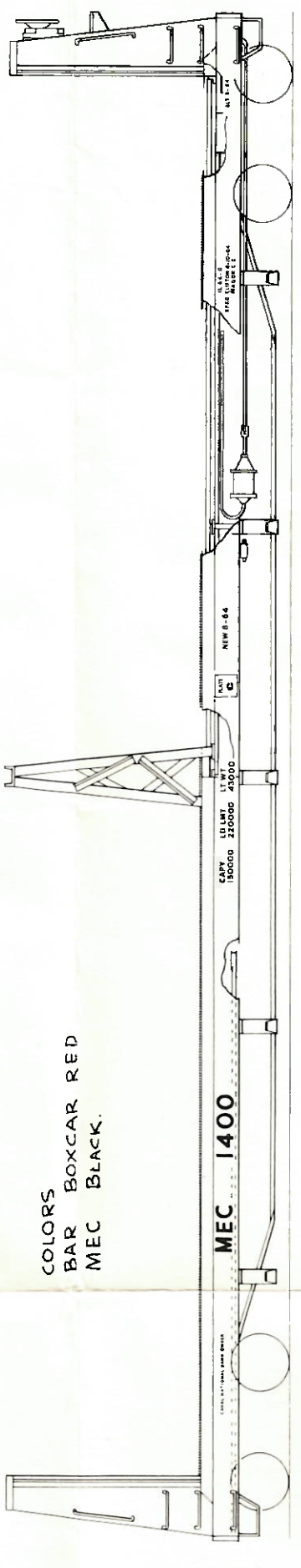
(1L) (2L) (4R) ALL HOLES $\frac{1}{32}$ "



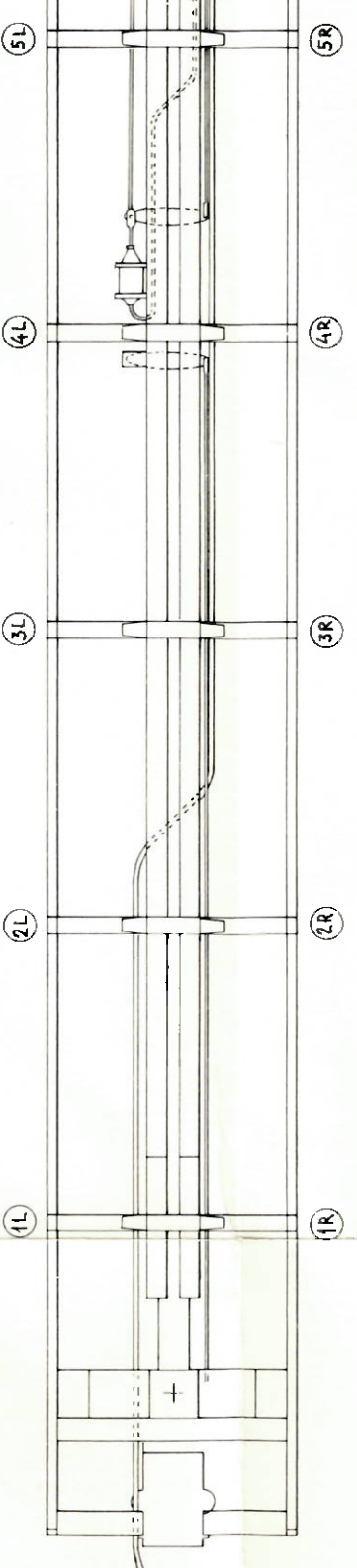
(1R) (2R) (3R) (4R) (5R)

(1L) (2L) (3L) (4L) (5L)

COLORS
 BAR BOXCAR RED
 MEC BLACK.

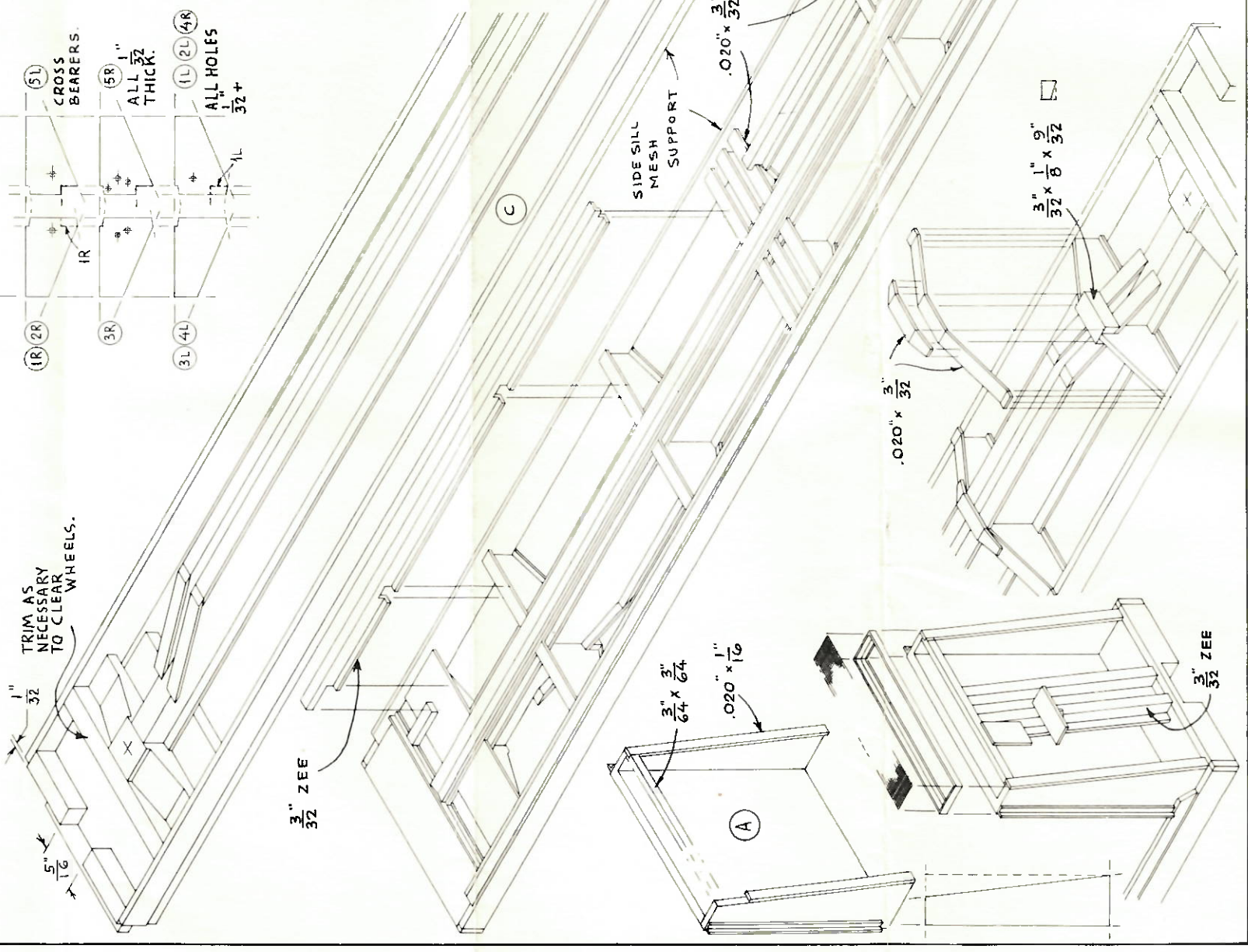


MEC 1400



(1L) (2L) (3L) (4L) (5L)

(1R) (2R) (3R) (4R) (5R)



$\frac{5}{16}$ "

$\frac{3}{32}$ " ZEE

$\frac{3}{4}$ " x $\frac{3}{64}$ "

$\frac{1}{16}$ "

$\frac{3}{32}$ " x $\frac{3}{32}$ "

$\frac{3}{32}$ " x $\frac{9}{32}$ "

$\frac{3}{32}$ " ZEE

$\frac{1}{8}$ " x $\frac{1}{8}$ "

CENTER PAN

$\frac{3}{16}$ " x $\frac{3}{16}$ "

$\frac{5}{64}$ " ASSY BLOCK

$\frac{3}{64}$ " x $\frac{5}{64}$ "

$\frac{1}{32}$ " x $\frac{3}{64}$ "

$\frac{3}{64}$ " ANGLE

Begin by carrying out the following pre-fabrication and sub-assemblies: trim center sill, cut brake lever and air pipe slots and cement $\frac{1}{16}$ " x $\frac{1}{8}$ " flanges; trim end bulkheads and cement strips (A); make up 4 center bulkhead members (B); cut out and drill cross bearers; notch end sills for coupler rockers.

Assembly of main frame (C) is done with underside of the car up, using the $\frac{5}{64}$ " assy blocks to support the wire hangers, the side sill mesh supports are $\frac{5}{64}$ " high up, the top of the center sill. Before cementing the wire hangers, the length of the side sills, which should be $\frac{1}{32}$ " shorter at each end than the stacked up components.

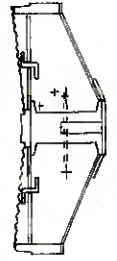
Cement the cross bearers in place, starting at the center. Be sure that their top edges are flush with the top of the center sill. Locate the $\frac{3}{64}$ " angles at each end (D). Fit the center pan between these angles and cement to the top of the center sill. Apply all the $\frac{1}{16}$ " strips. Notch the $\frac{3}{32}$ " zee mesh supports and cement in place. These should be in a plane with the center pan and the side sill mesh supports. Install the wire brake system parts, using the large wire for the main air pipe.

Fit and bulkheads to the car body. Before cementing to the car, the air reservoir should be cemented in place. Some trimming of this plastic part must be done so that it will fit the limited space. Drill the A5 parts for piping before installation.

Cement the end bulkheads to the car body. Install the $\frac{3}{32}$ " zee bracing and the various gussets. The center bulkhead should be installed last because it is susceptible to damage while the car is being handled.

Install the floor mesh, hardware and miscellaneous details. Paint and seal the car. Because of the wide preference for trucks and couplers, these are left to the builder's choice.

In case a part is missing or defective, or if you spot a part, send to NORTHEASTERN SCALE MODELS, Inc. for free replacement, specifying Kit HF-1.



BANGOR AND AROOSTOOK.
 MAINE CENTRAL
 70 TON BULKHEAD FLAT CAR

