

DECALS

PAINT. A semi-gloss finish is best for applying decals. They may not stick to a very flat (dull) surface. To obtain a semi-gloss finish, mix 20% to 25% gloss (gloss) in your flat paint. NEVER apply a decal until the paint is thoroughly dry.

TRIM decal close to lettering to eliminate excess film.

DIP in water for 5-10 seconds and set aside on blotter until decal "straightens out". DON'T let decal float around in a dish of water, as this will wash off all the adhesive.

SLIDE decal off paper backing, face up, into position. If necessary to move it, apply an additional drop of water and use the tooth.

SLIDE decal off paper backing, face up, into position. If necessary to move it, apply an additional drop of water with a tooth pick and use the tooth pick to move it.

SOAK UP excess water with the corner of a blotter or a piece of tissue.

SOLVASET (W. K. Walther's) applied to decal will snug it down into crevices and around rivets.

DDY (Walther's), a special flat varnish, applied to the entire model, decals and all, will produce a uniform, flat finish.

ASSEMBLY NOTES

Before cutting any parts or starting assembly, study the drawings and notes very carefully. Accurate work is necessary with this model, especially if the doors are to be operable.

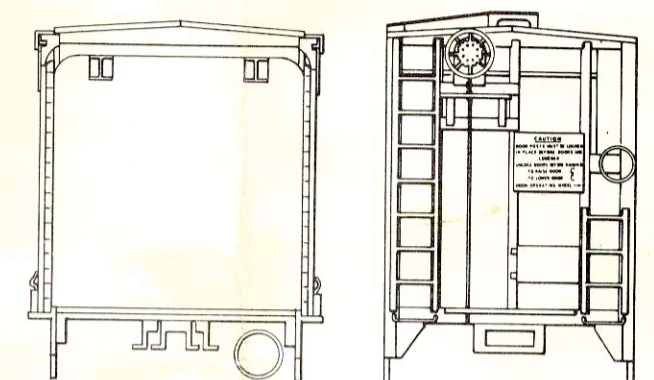
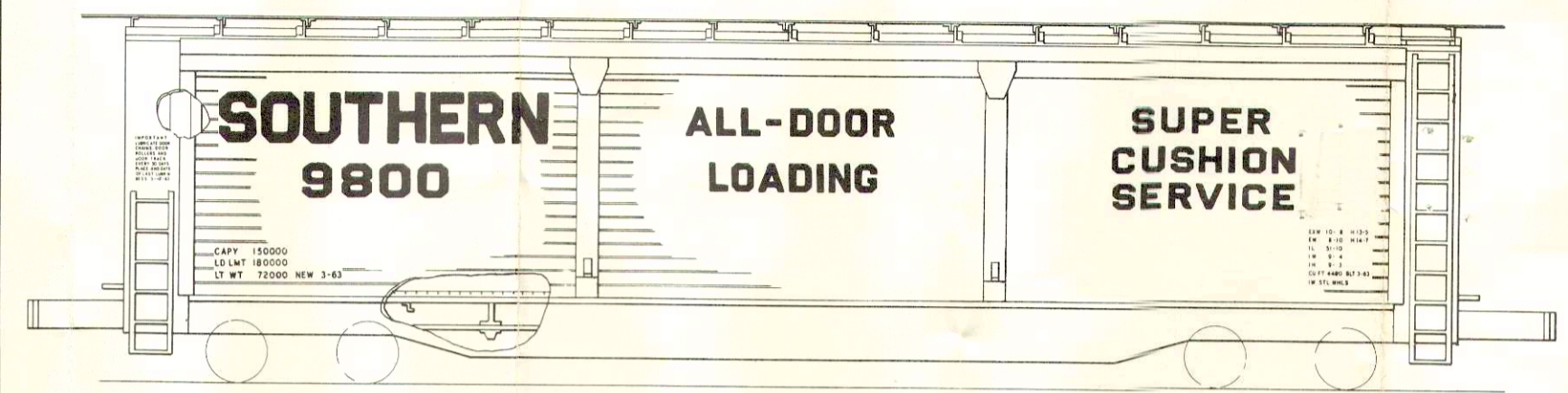
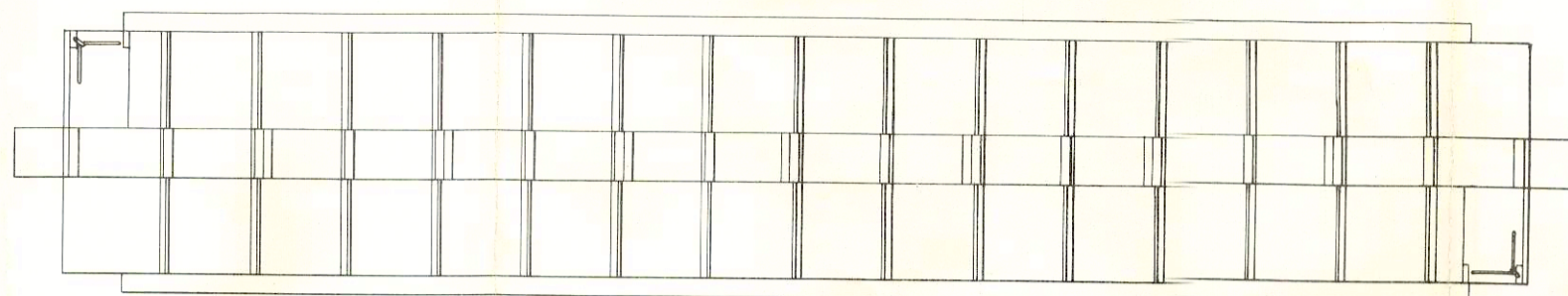
Build up the car through stages A-B-C, then paint the interior aluminum. The doors are then completed, right up to the decals, before installation. Door color is also aluminum. After installing the doors, attach the ladders, grabirons etc. and paint the entire car exterior boxcar red and apply decals.

This car uses heavy duty roller bearing trucks. Because of the great distance from the truck kingpin to the coupler face, as much side play should be worked into the coupler shank as possible, otherwise derailments may occur on short radius curves.

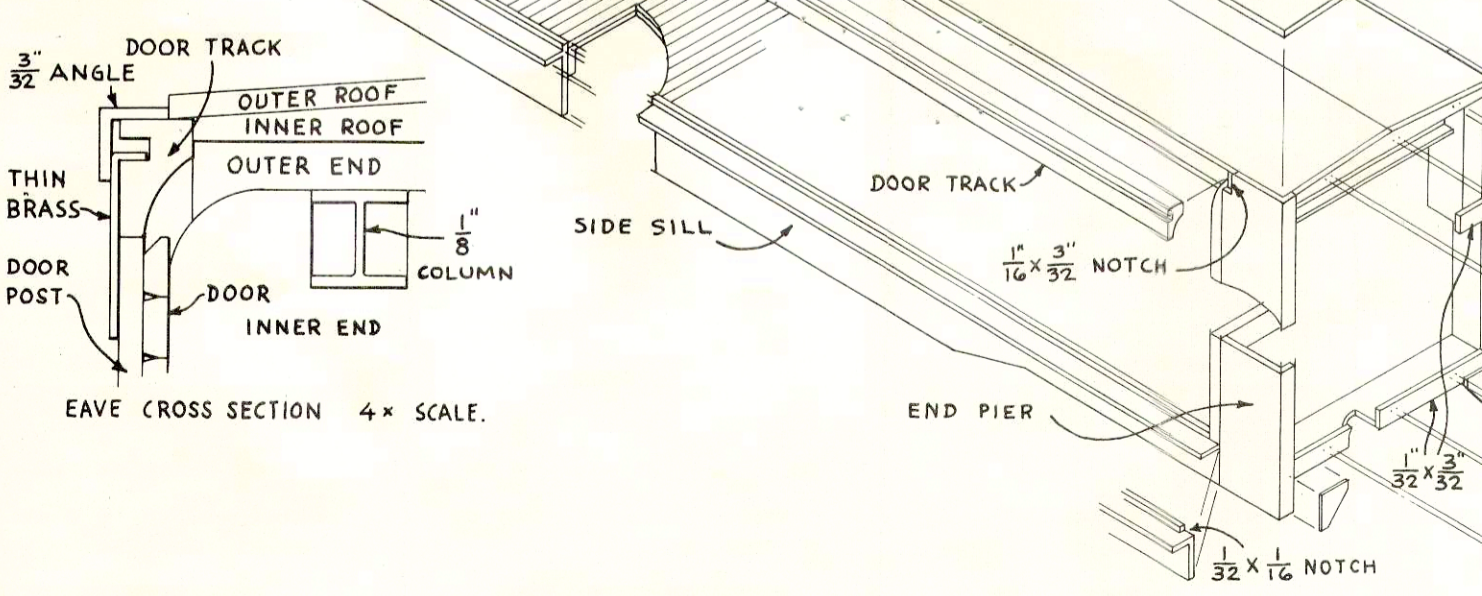
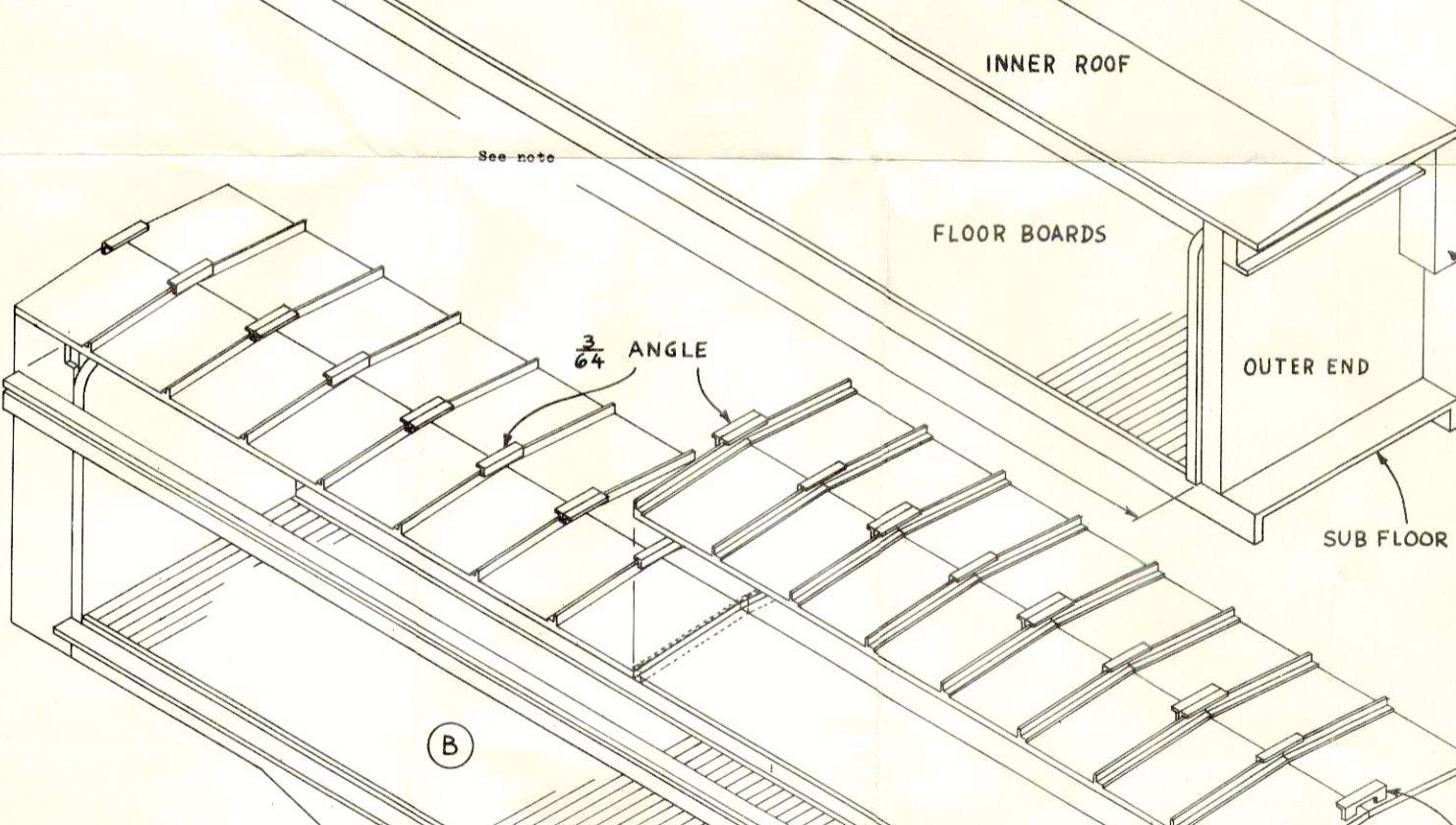
In the prototype, each door is in three sections which slide up and down in grooves in the door posts. It is perfectly correct to leave the car parked on a siding with the door open and the posts still in place. Incidentally, only one side of the car can be open at one time in both the prototype or model.

If a part is defective or missing, or if you spoil a part, send to NORTHEASTERN SCALE MODELS, Inc., Box 100, Ballard Vale, Mass. 01820, for free replacement.

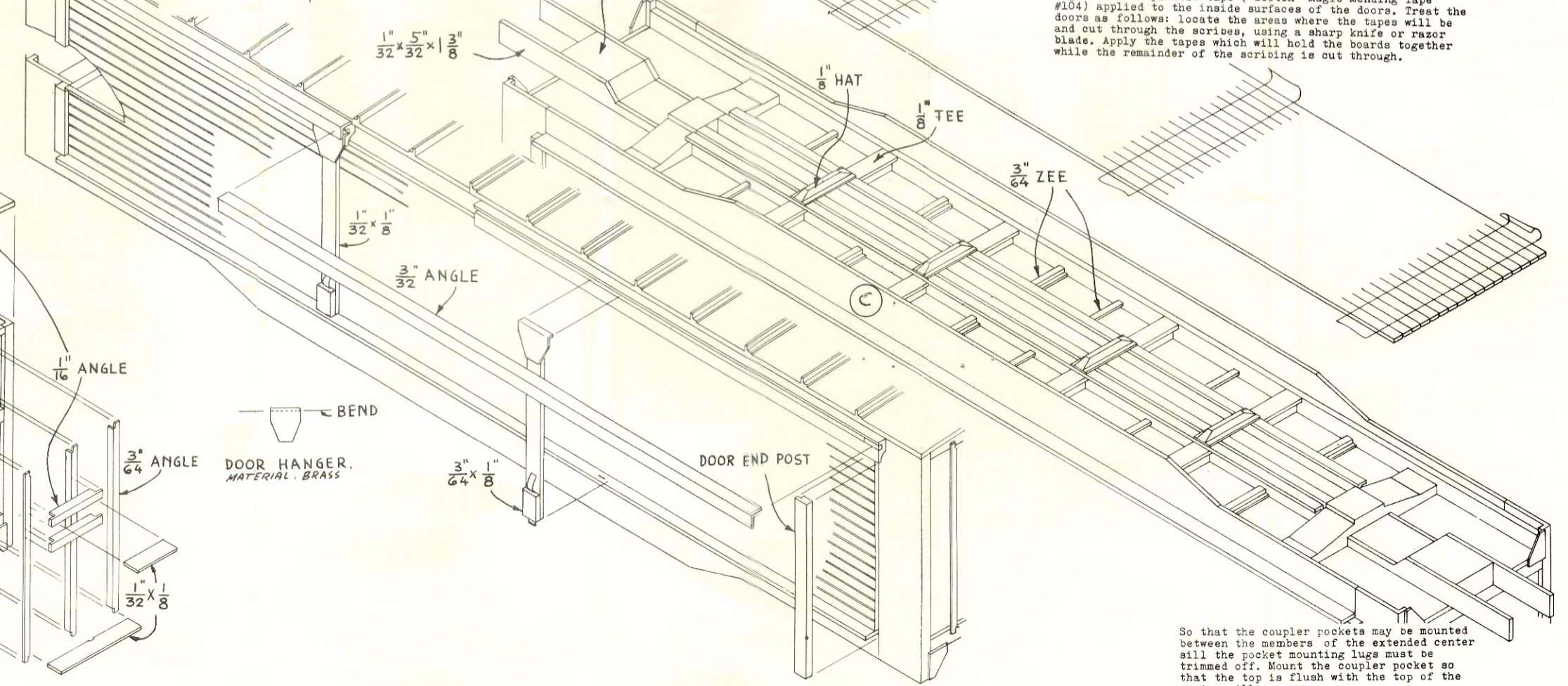
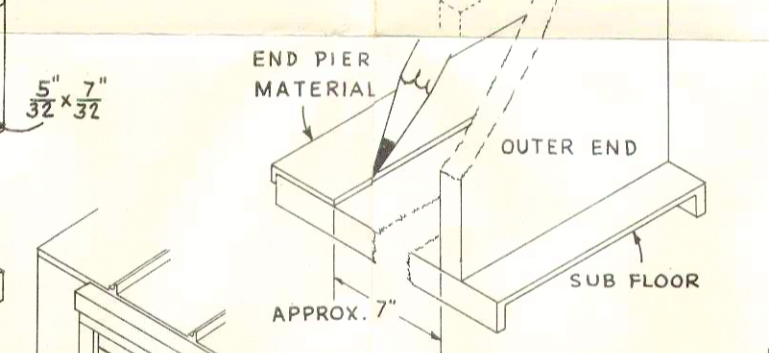
Because of the wide variety of couplers in use, these are not supplied in the kit.



SOUTHERN RAILWAY ALL-DOOR CAR.



Before assembling the basic car body, check the inner roof and sub-floor against each other for equal length. Trim the longer one if over-length. Using the pier material, mark both parts with a sharp pencil or knife point to locate position of the inner face of outer end.



This car and its lading are protected against fore and aft shock by a cushion type underframe. Basically there are two center sills. One runs the entire length of the car and terminates at the couplers. It is free to travel lengthwise within limits of the cushioning mechanism (springs) which take up the inertia loads of stops and starts.

The second center sill members are rigidly attached to the car body and are supplied with friction plates which have a damping action on the cushion mechanism. The total motion allowed by the cushioning system is approximately 5 ft.

Two lengths of center sill material are supplied in the kit. One is to be split down the middle and mounted as shown in the cross-section drawing.

The brake system on this car is very simple to model. The brake cylinders are buried in the trucks, are self equalizing so that there are no visible brake rods. Note the loops in the air lines to provide for the motion of the underframe.

The door material is supplied in one piece for both doors. Split along the center scribe and trim the other side to exactly 1 5/16" wide. The length should be 1/64" shorter than the distance between the outer ends.

The "boards" will have to be separated along the scribes so that the doors will roll up into the roof. They are held together with plastic tape (Scotch "Magic Mending Tape" #104) applied to the inside surfaces of the doors. Treat the doors as follows: locate the areas where the tapes will be and cut through the scribes, using a sharp knife or razor blade. Apply the tapes which will hold the boards together while the remainder of the scribing is cut through.

So that the coupler pockets may be mounted between the members of the extended center sill the pocket mounting lugs must be trimmed off. Mount the coupler pockets so that the top is flush with the top of the center sill.